

永遠最好



Always the best

鑫陽鋼鐵股份有限公司
SHIN YANG STEEL CO., LTD.

碳鋼鋼管產品

CARBON STEEL E.R.W. PIPES & TUBES

- 黑鋼管
Black Steel Pipes
- 鍍鋅鋼管
Hot-Dip Zinc-Coated Steel Pipes
- 配管用鋼管
Steel Pipes for Ordinary Piping
- 結構用鋼管
Structural Steel Pipes
- 電線用鋼管
Rigid Steel Conduit
- API套管及線管
API Casing and Line Pipes
- 消防撒水管
Steel Sprinkler Pipes
- 矩形管
Rectangular Steel Pipes
- 橢圓管
Cattle Rail Pipes (Oval Rails)



義聯集團
E UNITED GROUP

永遠最好



Always the best

燁輝企業
YIEH PHUI



專業是我們的優勢 · 品質是我們的榮譽

Professionalism Is Our Strength. Quality Product Is Our Pride.

鑫陽鋼鐵鋼管一廠全景 SHIN YANG STEEL NO.1 STEEL PIPE MILL PANORAMA



| 目錄 | 頁次 Page | CONTENTS |
|-----------|---------|---|
| 前言 | 03 | FOREWORD |
| 沿革 | 05 | COMPANY HISTORY |
| 鋼管製造流程 | 07 | FLOW CHART OF MANUFACTURING STEEL PIPES |
| 產品用途 | 09 | PRODUCT APPLICATIONS |
| 品質保證 | 11 | QUALITY ASSURANCE |
| 產品及品保制度驗證 | 13 | CERTIFICATES OF PRODUCT AND QUALITY MANAGEMENT SYSTEM |
| 鋼管規格 | 19 | SPECIFICATIONS FOR STEEL PIPES |
| 直縫碳鋼鋼管對照表 | 21 | WELDED WELDED CARBON STEEL PIPE SPECIFICATIONS |
| 各種鋼管產品規範 | 22 | STANDARDS OF PIPE PRODUCTS |
| 包裝、標籤及噴誌 | 47 | PACKAGING, LABELING AND MARKING |
| 訂購須知 | 48 | ORDERING INFORMATION |
| 未來展望 | 50 | FUTURE OUTLOOK |

聲明

鑫陽已盡力確保本型錄中資料之準確性。本型錄包含的所有資料若有任何更改，恕不另行通知。如有任何問題請洽詢鑫陽鋼管銷售部。

Shin Yang has endeavored to ensure the information provided in this brochure is correct at the time of publication. However, the information may be amended without notice. All enquiries should be made to Shin Yang Pipe Marketing & Sales Division.



自 1930 年代以來，隨著熱、冷軋鋼帶連續軋延生產技術的迅速發展，以及銲接、檢驗技術的進步，使得銲接品質不斷的提升，銲接鋼管的生產規格種類也日益增多，並在越來越多的領域替代了無縫鋼管的使用。近年來更由於有縫銲接鋼管生產技術成熟精進，生產效率高及成本低廉，而迅速促進了有縫鋼管產業的蓬勃發展。

鑫陽鋼鐵股份有限公司（以下簡稱鑫陽）是燁輝企業股份有限公司（以下簡稱燁輝企業或燁輝）基於全球鋼管市場發展策略考量，100%轉投資之子公司。鑫陽之前身為燁輝企業所屬之鋼管事業部，係燁輝企業於 2003 年 3 月併購原燁興企業鋼管廠時，同時設立之鋼管事業單位。其自燁興 1978 年開始建廠生產以來，即專營直縫鋼管之生產及銷售，迄今已經超過 30 年，產品包括各種黑鋼管、鍍鋅鋼管、EMT 鋼管、矩形管、API 套管及管線等，目前擁有九部製管機設備，年設計產能可達 37 萬公噸，不論結構用鋼管或配管用鋼管，均是台灣產量最大之專業鋼管製造廠。

為提高客戶服務品質，提升客戶滿意度，鑫陽將承襲義聯集團及燁輝公司—創新、成長、責任、永續之經營理念及優良的企業文化，並且以精實的品質與服務管理，繼續服務海內外客戶。另外，為確保產品品質符合客戶需求，鑫陽鋼鐵公司已建立一套完整的鋼管品質管理系統，在國內先後獲得 ISO 9001 及多項 CNS 認證，在國外也陸續通過美國 UL、FM 等消防認證與新 JIS Mark 日本工業規格、API 套管及管線認證，亦順利取得 OHSAS 18001 職業安全衛生管理系統及 TAF 檢測實驗室認證。鑫陽之鋼管產品行銷海內、外，諸如美國、澳大利亞、日本等地區，頗獲客戶之好評，也是台灣公營機關指定使用的鋼管產品。

鑫陽在 2011 年 3 月 1 日正式營運，並於 2011 年 5 月 1 日正式投產。另增設年產 2.5 萬公噸之中型管車及年產 12 萬公噸之 API 石油管線及套管之生產設備，已分別於 2011 年 8 月及 2012 年 1 月投產。期望舊雨新知繼續給予鑫陽支持及鼓勵，攜手共創未來。

With the rapid development of continuous hot-rolled and cold-rolled steel strip production and the advancement in welding and inspection technologies, the quality of welding has been continuously enhancing since 1930s. The specification of steel pipes and tubes has also increased day by day, and they have replaced the usage of seamless steel pipes and tubes in many fields. Due to the great improvement of production technology, high productivity and low cost, the welded steel pipe and tube production has grown rapidly and vigorously in recent years.

Due to the consideration of development strategies in global steel pipe market, YIEH PHUI established SHIN YANG STEEL CO., LTD. (hereinafter called SHIN YANG) and holds 100% of its shares. In March 2003, YIEH HSING's steel pipe mill was acquired by YIEH PHUI. The Pipe Business Division, the forerunner of SHIN YANG, was then established and started operating. Since its commission in 1978, YIEH HSING has specialized in the manufacturing and sales of welded steel pipes over 30 years. The products include all kinds of black steel pipes, galvanized steel pipes, EMT steel pipes, rectangular pipes, API steel pipes, pipelines, etc. SHIN YANG now owns 9 pipe-forming equipment. Its annual capacity reaches 370,000 metric tons, and thus it is the largest steel pipe and tube producer for both structural and ordinary piping in Taiwan.

In order to enhance the quality of service and increase customer satisfaction, inheriting the intrinsic excellent corporate culture of E United Group and Yieh Phui: innovation, growth, responsibility and continuity, quality and service management, SHIN YANG will keep providing services to the customers in Taiwan and all over the world. In order to ensure pipes and tubes meeting our customers' expectation, SHIN YANG has implemented a comprehensive quality assurance program, and has been awarded ISO 9001, CNS, UL, FM, API and JIS certificates. We, furthermore, have succeeded in obtaining OHSAS 18001 and TAF's testing measurement laboratory certificate. SHIN YANG's products have been delivered into international markets, especially to the U.S.A., Australia, and Japan. Our customers give our products high ratings. Our pipe and tube products are also designated for use by Taiwan state-owned enterprises.

SHIN YANG officially operates on March 1, 2011, and the first pipe was manufactured on May 1 in the same year. we have installed the pipe-forming equipment for middle-dimension pipe with annual capacity of 25,000mt and the production facilities for petroleum pipes and API casing (annual capacity: 120,000mt). The commission started in August and January 2012 respectively. SHIN YANG thanks for your generous support and looks forward to working with you, hand in hand for a bright future.



| | | | |
|------------|--|-----------|--|
| 1978 年 | 燁興企業所屬之鋼管廠開始建廠。 | 1978 | The first phase of steel pipe mill construction was started by YIEH HSING. |
| 1980 年 | 第一期建廠工程完成，生產各種結構用鋼管及鍍鋅鋼管。 | 1980 | The first phase of steel pipe mill construction was completed, specializing in manufacturing various kinds of structural and galvanized steel pipes & tubes, etc. |
| 1981 年 | 取得經濟部標準檢驗局之 CNS ㊟字標記機械結構用碳鋼鋼管、低壓有縫鋼管(白鋼管)、低壓有縫鋼管(黑鋼管)證書。 | 1981 | The mill obtained certificates of Chinese National Standards Mark of MOEA in Taiwan, including carbon steel pipes for machine structures, and welded steel pipes for low pressure use (galvanized & black steel pipes). |
| 1986 年 | 進行第二期擴建工程，生產各種傢俱管、運動器材管及 EMT 管。 | 1986 | The second phase of expansion was carried out, which enables the professional production of pipes & tubes for use in furniture material, sport equipment, electrical metallic tubing (EMT), and so forth. |
| 1989 年 | 取得經濟部標準檢驗局之 CNS ㊟字標記電線用鋼管、一般結構用碳鋼鋼管、壓力配管用碳鋼鋼管、一般結構矩形用碳鋼鋼管證書。 | 1989 | The mill obtained certificates of Chinese National Standards Mark of MOEA in Taiwan, including rigid steel conduit, carbon steel pipes for general structures, carbon steel pipes for pressure service, and carbon steel rectangular pipes for general structures. |
| 1991 年 | 投資更新由日本森機械株式會社製造的直邊成型製管機設備 2 部。 | 1991 | Two sets of straight-edge forming tube mill from Mori Machinery of Japan were installed. |
| 1995 年 | 取得經濟部標準檢驗局之 ISO 9001 鋼管類產品品質管理系統驗證證書。 | 1995 | The mill obtained ISO 9001 steel pipe related products certificate of Chinese National Standards Mark of MOEA in Taiwan. |
| 1998 年 | 取得經濟部標準檢驗局之 CNS ㊟字標記配管用碳鋼鋼管證書。 | 1998 | The mill obtained carbon steel pipes for ordinary piping certificate of Chinese National Standards Mark of MOEA in Taiwan. |
| 2003 年 3 月 | 燁輝企業併購燁興企業鋼管廠，同時設立鋼管事業部正式生產營運。 | Mar. 2003 | YIEH PHUI acquired the steel pipe mill of YIEH HSING Enterprise Co., Ltd. In the same year, the Pipe Business Division was established and started operating. |
| 2005 年 2 月 | 取得美國消防撒水管 UL 與加拿大 CUL 認證。 | Feb. 2005 | The mill obtained Metallic Sprinkler Pipe UL in the U.S.A. & CUL Approval in Canada. |
| 2006 年 2 月 | 取得美國石油協會認證 API Spec 5L PSL 1 與 API Spec 5CT Group 1。 | Feb. 2006 | The mill obtained API Spec 5L PSL 1 and 5CT Group 1 certificates in the U.S.A. The mill also obtained SPS Flow Steel Sprinkler Pipe FM Approval (1¼" ~2") in the U.S.A. |
| | 取得美國消防撒水管 FM 認證 (1¼"~2")。 | | |
| | 7 月 取得美國消防撒水管 FM 認證 (2¼"~4")。 | | |
| 2010 年 7 月 | 投資設置 API 鋼管生產線。 | Jul. 2010 | The mill obtained SPS Flow Steel Sprinkler Pipe FM Approval (2½" ~4") in the U.S.A. An API petroleum pipe production line was under construction. |
| 12 月 | 投資設置方、矩形製管車。 | Jul. | |
| 2011 年 3 月 | 『鑫陽鋼鐵股份有限公司』正式營運，成為專業鋼管製造公司。 | Dec. | The mill purchased and installed Carbon Steel Rectangular Tube Making Machine. |
| | 取得美國石油協會認證 API Spec 5L PSL 1 與 API Spec 5CT Group 1。 | Mar. 2011 | SHIN YANG STEEL CO., LTD. officially operated, becoming a professional steel pipe & tube producer. The mill obtained API Spec 5L PSL 1 and 5CT Group 1 certificates in the U.S.A. The mill obtained ISO 9001 steel pipe related products certificate of Chinese National Standards Mark of MOEA in Taiwan. |
| | 取得經濟部標準檢驗局之 ISO 9001 鋼管類產品品質管理系統驗證。 | | |
| | 5 月 『鑫陽鋼鐵股份有限公司』正式投產。 | May | SHIN YANG commissioned. The mill obtained radiation inspection operation approval in steel industry from the Atomic Energy Council, the Executive Yuan, R.O.C. The mill obtained SPS Flow Steel Sprinkler Pipe UL & FM Approval in the U.S.A. and CUL Approval in Canada. The company has acquired eight CNS certificates from Bureau of Standards, Metrology & Inspection, M.O.E.A., R.O.C. |
| | 取得行政院原子能委員會鋼鐵業輻射偵檢作業認可證明。 | | |
| | 取得美國消防撒水管 UL、FM 與加拿大 CUL 認證。 | | |
| | 取得經濟部標準檢驗局 CNS 8 項㊟字標記產品證書。 | | |
| | 8 月 中型管車安裝完成開始試俾投產。 | Aug. | The pipe-forming equipment for middle-dimension pipes started trial production. |
| 2012 年 1 月 | API 管車安裝完成開始試俾投產。 | Jan. 2012 | API equipment installed and started trial production. SHIN YANG obtained OHSAS 18001 certification from Bureau of Standards, Metrology & Inspection, M.O.E.A. |
| | 取得經濟部標準檢驗局之 OHSAS18001 職業安全衛生管理系統驗證。 | | |
| | 4 月 取得全國認證基金會 TAF 之檢測實驗室認證。 | Apr. | SHIN YANG acquired testing measurement laboratory certificate of accreditation from the Taiwan Accreditation Foundation (TAF). |
| 2013 年 7 月 | 取得新 JIS Mark 日本工業規格認證。 | Jul. 2013 | SHIN YANG obtained Japanese Industrial Standard JIS Mark. |
| 2014 年 4 月 | 取得 CE Mark 歐盟 EN 產品規格認證。 | Apr. 2014 | SHIN YANG obtained CE certification of EU EN product specification. |



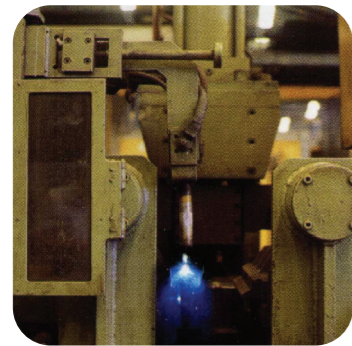
鋼管製造流程

FLOW CHART OF MANUFACTURING STEEL PIPES

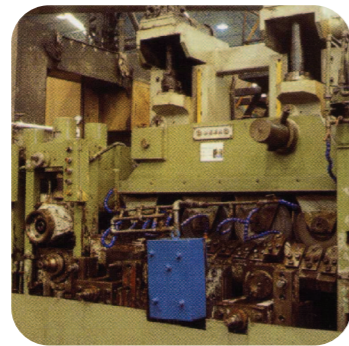


產製能力表 Manufacturing Capacity

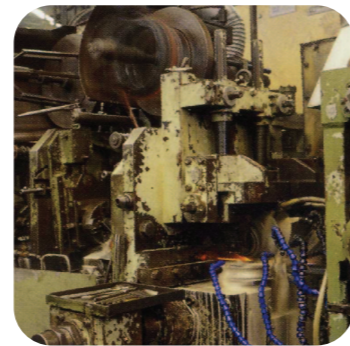
| 產線別 LINE | 生產外徑 O.D.(inch) | 生產厚度 THICKNESS(mm) | 年設計產能 CAP./Y(mt) | 製造商 MANUFACTURERS |
|----------------------------|------------------------------|--------------------|------------------|-------------------|
| 製管一線 No.1 PIPE LINE | 4" ~ 8", 125x125mm~150x150mm | 2.15~6.4 | 30000 | 義成 (Taiwan 台灣) |
| 製管二線 No.2 PIPE LINE | 1/2" ~ 3" | 1.5~5.5 | 60000 | 森 MORI (Japan 日本) |
| 製管三線 No.3 PIPE LINE | 1/2" ~ 3" | 1.5~5.5 | 60000 | 森 MORI (Japan 日本) |
| 製管四線 No.4 PIPE LINE | 4" ~ 6", 75x75mm~100x100mm | 1.7~5.8 | 30000 | 華興機械 (Taiwan 台灣) |
| 製管六線 No.6 PIPE LINE | 1/2" ~ 2" | 0.82~2.43 | 20000 | 凱全 (Taiwan 台灣) |
| 製管七線 No.7 PIPE LINE | 1/2" ~ 2" | 0.75~2.3 | 20000 | 凱全 (Taiwan 台灣) |
| 製管八線 No.8 PIPE LINE | 5/8" ~ 1", 16x16mm~15x30mm | 0.75~1.5 | 6000 | 成台 (Taiwan 台灣) |
| 製管 A 線 No.A PIPE LINE | 20x50mm~48x120mm | 1.5~6.0 | 25000 | 慧登 (Taiwan 台灣) |
| 製管 B 線 No.B PIPE LINE | 4-1/2" ~13-3/8" | 3.2~12.7 | 120000 | 華晟 (China 大陸) |
| 鍍鋅一線 No.1 GALVANIZING LINE | 1/2" ~ 4" | - | 40000 | 協亞 (Japan 日本) |



鋼帶接合
Strip Joining



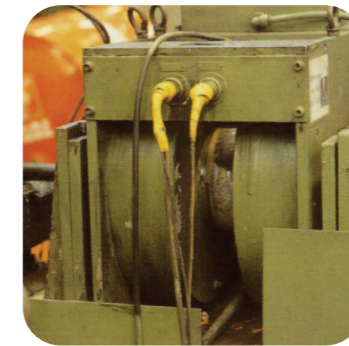
鋼管直邊成型
Straight-Edge Forming Section



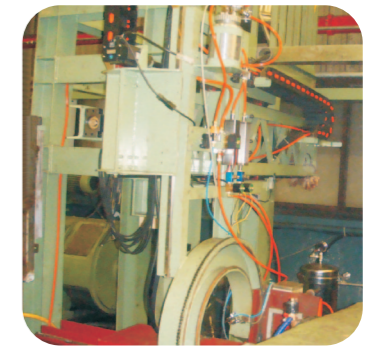
高週波熔接
H.F. Welding



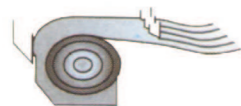
中週波熱處理
Seam Annealer



渦流探傷
Eddy Current Test



超音波 (API 管)
Ultrasonic Test (API pipe)



鋼捲分條
Slitting



分條帶
Strip



解捲機
Uncoiler

自動積料架
Loop Accumulator

鋼管直邊成型
Straight-Edge Forming Section

高週波熔接
H.F. Welding

中週波熱處理
Seam Annealer

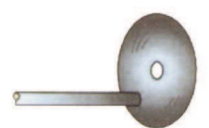
定徑軋
Sizing Roll

定徑軋
Sizing Roll

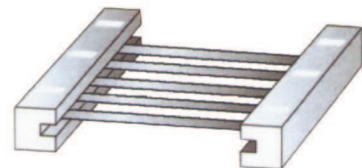
渦流探傷
Eddy Current Test

銲珠剔除
Bead Removal

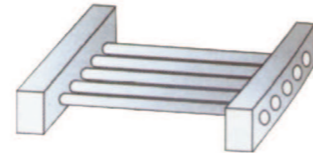
超音波探傷
Ultrasonic Test



切斷機
Cut-Off



修面機
Facer



水壓測試
Hydrostatic Test



修面機
Facer



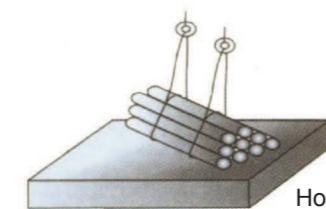
水壓測試
Hydrostatic Test



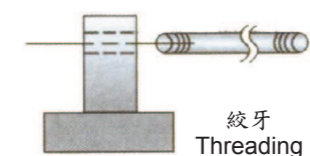
熱浸鍍鋅
Hot-dip Galvanizing



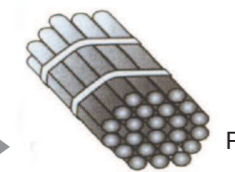
包裝
Packing



熱浸鍍鋅
Hot-dip Galvanizing



絞牙
Threading



包裝
Packing



產品用途

FLOW CHART OF MANUFACTURING STEEL PIPES

產品用途可分為

消防管、瓦斯管、冷凍管、空調管、鷹架管、壓力配管、電線用管、自動倉儲用管、千斤頂用管、結構用管、傢俱管、帳棚花架管等等。

PRODUCT APPLICATIONS

Steel pipe and tube for fire services, natural gas, refrigeration, air-conditioning, scaffolding, pressure services, rigid steel conduit, automatic warehouse, jack, general and machinery structure purposes, furniture, greenhouse farming services, and so forth.



鷹架管
Scaffolding



高速公路護欄
Highway Guardrail



自動倉儲用管
Automatic Warehouse



燈柱
Lamp Pole



溫室支架管
Steel Tube for Greenhouse Farming Services-
to Support Plants



箱網養殖用管
Steel Tube for Mariculture Services as
Material of Cage Aquaculture



瓦斯壓力配管
Gas Pressure Services



消防管
Fire Services Pipe



巴士車架管
Bus Frame Services



電線用管
Rigid Steel Conduit



路標指示用管
Guideboard Display Pole



冷凍管 / 空調管
Refrigeration/Air-conditioning Pipe



為確保所產製之鋼管達到客戶之要求，本公司除建立一套完整、嚴密之品質管理制度外，更不惜投下鉅資，配合最新式之生產設備，購置各種精密之試驗檢測儀器，作為製程解析回饋改善之用，並設立鋼管技術部，提供客戶售前、售後服務以達到品質保證之目的，並提供研究發展之需。

為強化品保制度，燁輝企業於2003年3月起陸續申請並通過經濟部標準檢驗局 ISO 9001 國際認證，與榮獲經濟部標準檢驗局㊟字標記；另外，於2005年2月取得美國消防撒水管 UL 與加拿大 CUL 認證；2006年2月取得美國石油協會 API 5L、5CT 認證，並取得美國消防撒水管 FM 認證。

而鑫陽於2011年3月取得經濟部標準檢驗局 ISO 9001 國際認證及5月取得標準檢驗局 CNS 8 項㊟字標記認證。同時3月也取得美國石油協會 API 5L、5CT 認證及5月取得美國消防撒水管 UL、FM 與加拿大 CUL 認證。另外2012年4月也取得 TAF 之檢測實驗室認證，以及於2013年7月取得新 JIS 日本工業規格認證。由此可以證明本公司產品之精良及品質保證作業體系之完整嚴密。

We have established and implemented a comprehensive quality assurance program to ensure that the quality of our products, at a minimum, meets our customer requirements. In addition, we have invested in advanced on-line testing equipments and laboratory facilities for the analysis and improvement of the production processes. Our Technology Division provides pre-sales and after-sales service to our customers as a step in realizing the aims of our QA program and sets objectives for our R&D program.

In order to further strengthen our quality assurance, Yieh Phui has applied and been granted ISO 9001 and the standard mark ㊟ from the Bureau of Standards, Metrology & Inspection (BSMI) since March 2003. In addition, the mill obtained Metallic Sprinkler Pipe UL Approval in the U.S.A. and CUL Approval in Canada in February 2005; it also obtained API 5L & 5CT certificates and SPS Flow Steel Sprinkler Pipe FM Approval in the U.S.A. in February 2006.

Shin Yang was granted ISO 9001 registration in March 2011 and CNS standard mark ㊟ for eight products issued by BSMI, Ministry of Economic Affairs in May 2011. Besides, Shin Yang acquired API 5L & 5CT from American Petroleum Institute in March, and Metallic Sprinkler Pipe UL & FM and CUL Approval in May 2011. In April of 2012, Shin Yang earned the certificate of accreditation for testing measurement laboratory, and obtained Japanese Industrial Standard JIS Mark in July 2013. This proves that our product quality and process systems are very advanced.



手提式超音波
Ultrasonic Phase Array



X 射線螢火光譜儀
Energy Dispersive X-Ray
Fluorescence Analysis (EDXRF)



拉伸試驗機
Tension Tester



金相組織測試
Metallurgical Microscope



化驗室
Chemical Laboratory



LECO 輝光放電光譜儀
LECO Glow Discharge Spectrometer



鹽水噴霧試驗機
Salt Spray Tester



感應耦合電漿放射光譜儀
Inductively Coupled Plasma (ICP)
Optical Emission Spectrometer



產品及品質保制度認證

CERTIFICATES OF PRODUCT AND QUALITY MANAGEMENT SYSTEM



| 認證機構 Certificate Authority | 認證種類 Certificate Category | 認證項目 Certificate Items | 認證字號 Certificate No. |
|---|------------------------------|--|-----------------------------------|
| 經濟部 標準檢驗局 Bureau of Standards, Metrology and Inspection, MOEA (BSMI) | 正字標記認證 CNS Mark | CNS 2606 C4060 電線電纜用鍍鋅鋼製導線管 Galvanized Steel conduits for electrical wires and cables | 台正字第 7750 號 Taiwan CNS No.7750 |
| | | CNS 4435 G3102 一般結構用碳鋼鋼管 Carbon Steel Pipes for General Structures | 台正字第 7753 號 Taiwan CNS No.7753 |
| | | CNS 4437 G3103 機械結構用碳鋼鋼管 Carbon Steel Pipes for Machine Structures | 台正字第 7754 號 Taiwan CNS No.7754 |
| | | CNS 4626 G3111 壓力配管用碳鋼鋼管 Carbon Steel Pipes for Pressure Service | 台正字第 7755 號 Taiwan CNS No.7755 |
| | | CNS 6445 G3127 配管用碳鋼鋼管 Carbon Steel Pipes for Ordinary Piping | 台正字第 7756 號 Taiwan CNS No.7756 |
| | | CNS 7141 G3134 一般結構用矩形碳鋼鋼管 Carbon Steel Rectangular Pipes for General Structures | 台正字第 7757 號 Taiwan CNS No.7757 |
| | ISO 9001:2015/ CNS 12681 | 鋼管類產品 Steel Pipe Products | 7M8Y009 |



ISO 9001
品質管理系統驗證證書
Quality Management System Certificate



OHSAS 18001
職業安全衛生管理系統驗證證書
Occupational Health And Safety Management System Certificate



CERTIFICATES OF PRODUCT AND QUALITY MANAGEMENT SYSTEM



CNS 6445 G3127 配管用碳鋼鋼管正字標記證書
Carbon Steel Pipes for Ordinary Piping 規格表示證書



CNS 4626 G3111 壓力配管用碳鋼鋼管正字標記證書
Welded Steel Pipes for Pressure Service



CNS 7141 G3134 一般結構矩形碳鋼鋼管正字標記證書
Carbon Steel Rectangular Pipes for General Structures



CNS 2606 C4060 電線電纜用鍍鋅鋼製導線管正字標記證書
Galvanized Steel conduits for electrical wires and cables



CNS 4435 G3102 一般結構用碳鋼鋼管正字標記證書
Carbon Steel Pipes for General Structures



CNS 4437 G3103 機械結構用碳鋼鋼管正字標記證書
Carbon Steel Pipes for Machines Structures



JIS 日本工業規格表示證書



JIS 日本工業規格表示證書



產品及品保制度認證

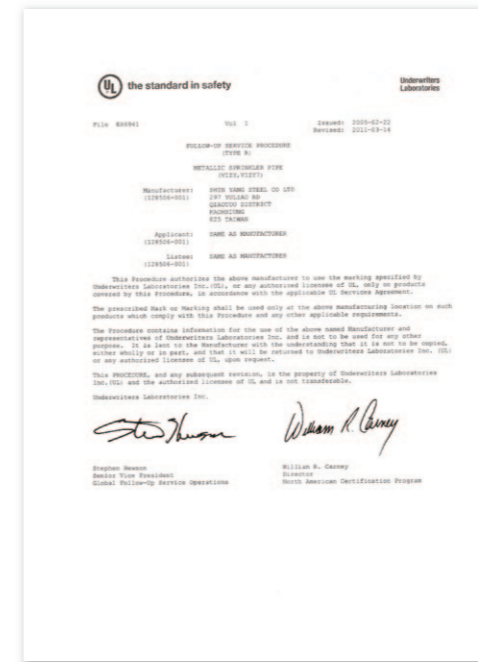
CERTIFICATES OF PRODUCT AND QUALITY MANAGEMENT SYSTEM



美國石油協會認證 API Spec 5L PSL 2
API Spec 5L PSL 2 Certificate



美國石油協會認證 API Spec 5CT Group 1
API Spec 5CT Group 1 Certificate



消防撤水管 UL 與 CUL 認證
Metallic Sprinkler Pipe
UL & CUL Approval



鋼鐵業輻射偵檢作業認可證明
Radiation Inspection
Operation Approval



1 1/4"~2" 消防撤水管 FM 認證
SIZES 1 1/4"~2" SPS Flow Steel Sprinkler Pipe FM
Approval



2 1/2"~4" 消防撤水管 FM 認證
SIZES 2 1/2"~4" SPS Flow Steel Sprinkler
Pipe FM Approval



TAF 財團法人全國認證基金會認證證書 (中文版)

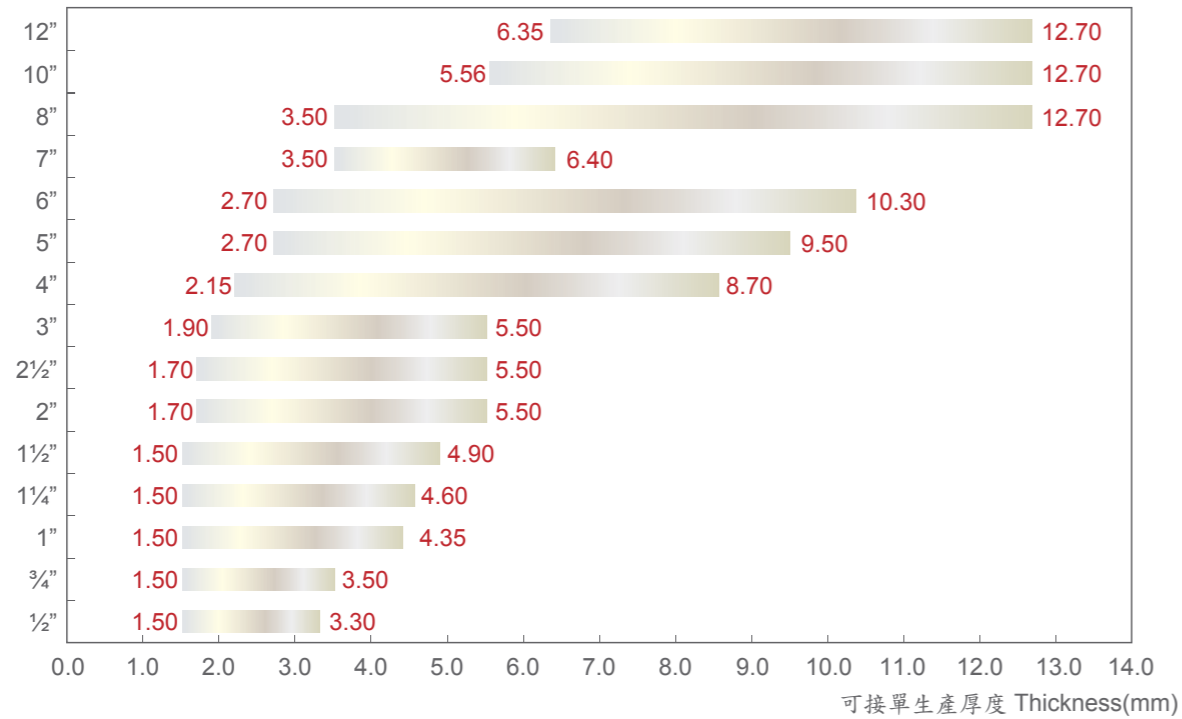


TAF Taiwan Accreditation Foundation
Approval Certificate
(English edition)



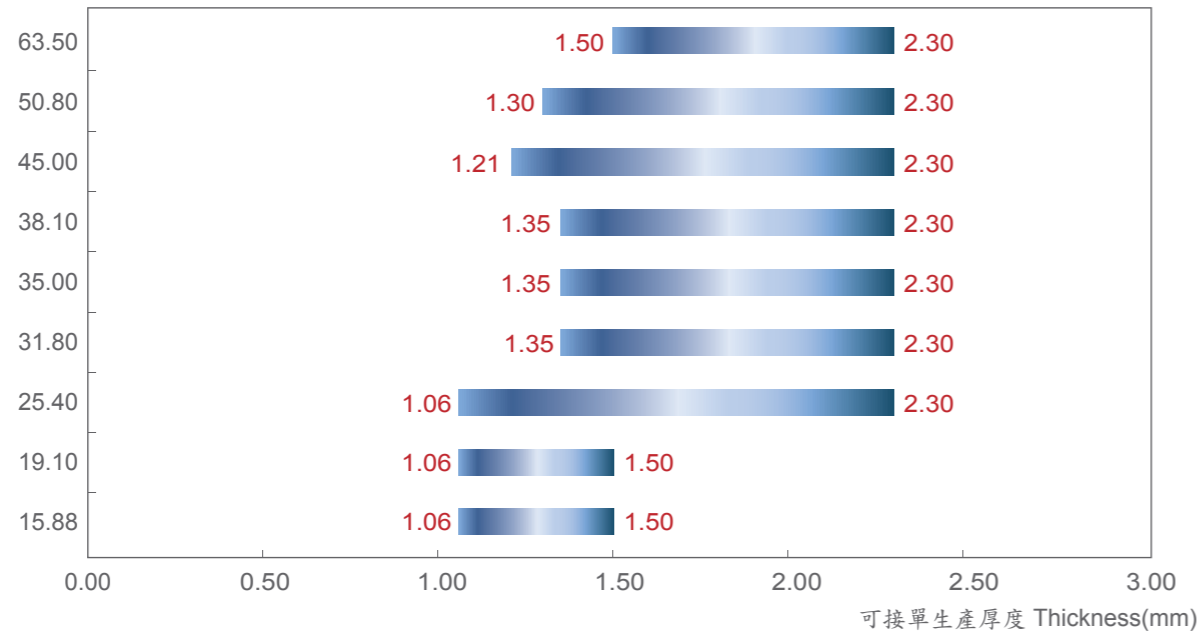
圓管-水道管外徑 Round Pipes

標稱管徑 Nominal Diameter(mm)

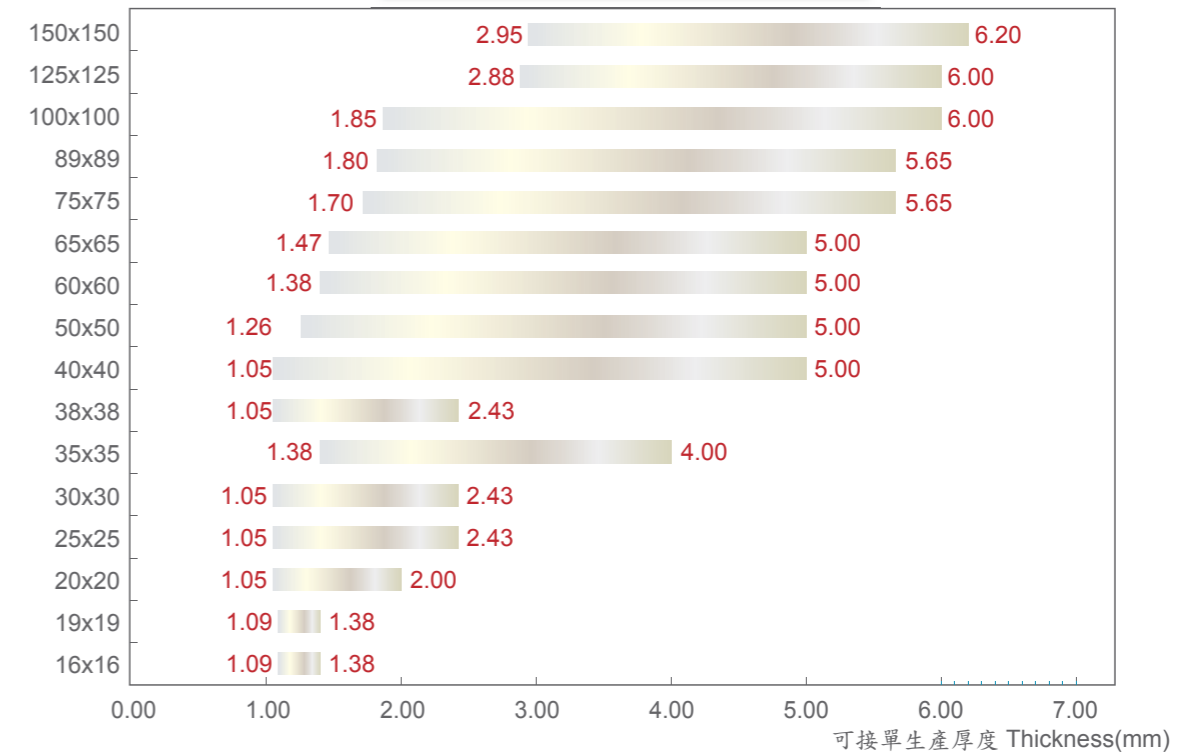


圓管-傢俱管外徑 Round Tubes

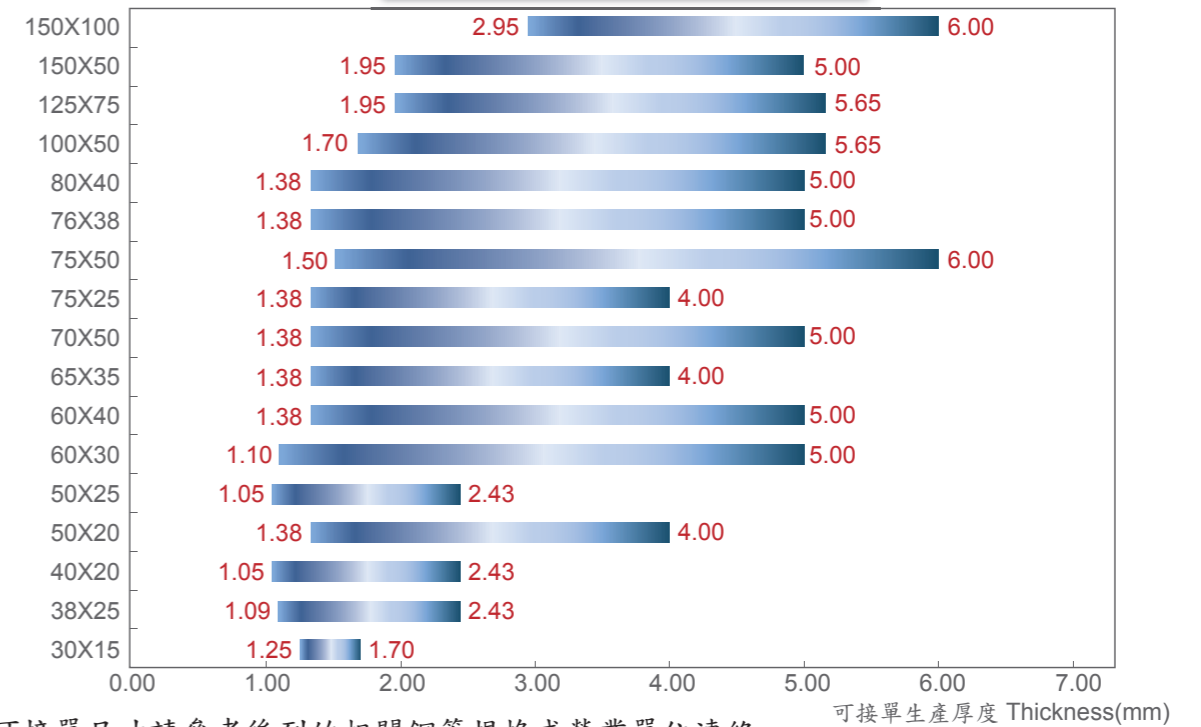
外徑 Outside Diameter(mm)



外徑 Outside Diameter(mm) 方形管 Square Hollow Section



外徑 Outside Diameter(mm) 矩形管 Rectangular Hollow Section



註：詳細可接單尺寸請參考後列的相關鋼管規格或營業單位連絡
For the detailed acceptable dimensions for pipe products, please refer to the following pages or contact our sales representatives.



直縫碳鋼鋼管規範對照表

WELDED CARBON STEEL PIPE SPECIFICATIONS

| 用途別 Use | 配管用管 Pipes for Ordinary Piping | | 結構用管 Structural Pipes | | 電線 用管 Rigid Steel Conduit | API套管 及線管 API Casing and Line Pipes | 消防 ③ 撒水管 Sprinkler Pipes | 矩形管 Rectangular Pipes | | 傢俱用管 Furniture Pipes | 橢圓管 Cattle Rail Pipes |
|------------------|-----------------------------------|----------------|--------------------------|----------------|---------------------------------------|--|--------------------------------------|--------------------------|-------------------|----------------------------|--------------------------------|
| | 流體 Fluid | 壓力 Pressure | 一般用 General | 機械用 Machine | | | | 一般用 General | 結構用 Structural | | |
| CNS ^① | 6445 | 4626 | 4435 | 4437 | 2606 | | | | 7141 | | |
| JIS ^④ | G3452 | G3454 | G3444 | G3445 | | | | | G3466 | | |
| ASTM | A53 | | A500 | | | | A135 A795 | | | | |
| CSA | | | G40.20/G40.21 | | | | | | | | |
| EN | 10255 | 10219 | 10217 | | | | | | | | |
| BS | 1387 | | | | | | | | | | |
| API ^② | | | | | | | 5L 5CT | | | | |
| AS | 1074 | | 1163 | | | | | 1163 | 1163 | | 1450 |
| ANSI | | | | | C80.1 | | | | | | |
| SYS ^⑤ | ◎ | ◎ | ◎ | ◎ | ◎ | ---- | ---- | ◎ | ◎ | ◎ | ◎ |

備註 Note

① 上述CNS鋼管產品皆已取得㊟字標誌詳列如后。

② API 5L與API 5CT皆已取得API monogram認證。

③ ASTM A135與ASTM A795皆已取得UL、CUL與FM認證。

④ JIS G3452、G3454、G3444、G3445、G3466接取新JIS MARK認證。

⑤ SYS表鑫陽廠內規格。

① For all CNS products, Shin Yang has been authorized to use CNS ㊟ Monogram.

② For API 5L and 5CT products, Shin Yang has been authorized to use API Monogram.

③ For ASTM A135 and A795 products, Shin Yang has been approved by UL, CUL, and FM.

④ For JIS G3452, G3454、G3444、G3445、G3466 Shin Yang has been authorized to use JIS industrial standard monogram.

⑤ SYS refers to Shin Yang Standard.

各種鋼管產品規範

STANDARDS OF PIPE PRODUCTS



配管用管—CNS 6445/JIS G3452配管用碳鋼鋼管

CNS 6445 G3127 Carbon Steel Pipes for Ordinary Piping.

JIS G3452 Carbon Steel Pipes for Ordinary Piping.

| 標稱管徑 Nominal Diameter | | 外徑 Outside Diameter | 外徑許可差 Tolerances on outside diameter | | 厚度 Wall Thickness | 單位重量 ^① Unit Mass |
|------------------------------|----|---|--|---------------------------|----------------------|--------------------------------|
| A | B | | 螺紋鋼管(牙管) Pipes to be cut in taper thread | 其它鋼管(平口) Other Pipes | | |
| | | mm | | | mm | kg/m |
| 15 | ½ | 21.7 | ±0.5mm | ±0.5mm | 2.8 | 1.31 |
| 20 | ¾ | 27.2 | ±0.5mm | ±0.5mm | 2.8 | 1.68 |
| 25 | 1 | 34.0 | ±0.5mm | ±0.5mm | 3.2 | 2.43 |
| 32 | 1¼ | 42.7 | ±0.5mm | ±0.5mm | 3.5 | 3.38 |
| 40 | 1½ | 48.6 | ±0.5mm | ±0.5mm | 3.5 | 3.89 |
| 50 | 2 | 60.5 | ±0.5mm | ±1% | 3.8 | 5.31 |
| 65 | 2½ | 76.3 | ±0.7mm | ±1% | 4.2 | 7.47 |
| 80 | 3 | 89.1 | ±0.8mm | ±1% | 4.2 | 8.79 |
| 100 | 4 | 114.3 | ±0.8mm | ±1% | 4.5 | 12.2 |
| 125 | 5 | 139.8 | ±0.8mm | ±1% | 4.5 | 15.0 |
| 150 | 6 | 165.2 | ±0.8mm | ±1.6mm | 5.0 | 19.8 |
| 175 | 7 | 190.7 | ±0.9mm | ±1.6mm | 5.3 | 24.2 |
| 200 | 8 | 216.3 | ±1.0mm | ±0.8% | 5.8 | 30.1 |
| 厚度公差 Thickness Tolerances | | +不限制， -12.5% | | +not specified, -12.5% | | |
| 備註 Note | | ① 此單位重量為不包括接頭之單位重量。 ① The Unit Mass doesn't include Socket. | | | | |



STEEL PIPES FOR ORDINARY PIPING

配管用管—CNS 4626/JIS G3454 壓力配管用碳鋼鋼管
CNS 4626 G3111 Carbon Steel Pipes for Pressure Service.
JIS G3454 Carbon Steel Pipes for Pressure Service.

| 標稱管徑 Nominal Diameter | | 外徑 Outside Diameter | 標稱厚度號數 Nominal Wall Thickness | | | | | |
|------------------------------|-------|---------------------------------------|----------------------------------|--|-------------------------|-------------------|--|-------------------|
| | | | Schedule 20 | | Schedule 40 | | Schedule 60 | |
| | | | 厚度 Wall Thickness | 單位重量 Unit Mass | 厚度 Wall Thickness | 單位重量 Unit Mass | 厚度 Wall Thickness | 單位重量 Unit Mass |
| A | B | mm | kg/m | mm | kg/m | mm | kg/m | |
| 15 | 1/2 | 21.7 | - | - | 2.8 | 1.31 | 3.2 | 1.46 |
| 20 | 3/4 | 27.2 | - | - | 2.9 | 1.74 | 3.4 | 2.00 |
| 25 | 1 | 34.0 | - | - | 3.4 | 2.57 | 3.9 | 2.89 |
| 32 | 1 1/4 | 42.7 | - | - | 3.6 | 3.47 | 4.5 | 4.24 |
| 40 | 1 1/2 | 48.6 | - | - | 3.7 | 4.10 | 4.5 | 4.89 |
| 50 | 2 | 60.5 | 3.2 | 4.52 | 3.9 | 5.44 | 4.9 | 6.72 |
| 65 | 2 1/2 | 76.3 | 4.5 | 7.97 | 5.2 | 9.12 | 請預先詢問 Please subject to prior negotiation. | |
| 80 | 3 | 89.1 | 4.5 | 9.39 | 5.5 | 11.3 | | |
| 100 | 4 | 114.3 | 4.9 | 13.2 | 6.0 | 16.0 | | |
| 125 | 5 | 139.8 | 5.1 | 16.9 | 6.6 | 21.7 | | |
| 150 | 6 | 165.2 | 5.5 | 21.7 | 7.1 | 27.7 | | |
| 厚度公差 Thickness Tolerances | | 厚度未滿3mm : ±0.3mm ; 厚度3mm 以上 : ±10% | | Thickness under 3mm : ±0.3mm ; Thickness 3mm and above : ±10% | | | | |

配管用管—BS 1387 銲接平口、絞牙鋼管
BS 1387 Screwed and Socketed Steel Tubes and Tubulars and for Plain End
Steel Tubes Suitable for Welding or for Screwing to BS 21 Pipe Threads.

| 標稱尺度 Nominal Size | | 級別 Class | 鋼管外徑 Outside Diameter | | 厚度 Wall Thick- ness | 單位重量 Unit Mass | | 級別 Class | 鋼管外徑 Outside Diameter | | 厚度 Wall Thick- ness | 單位重量 Unit Mass | |
|------------------------------|-----|---|--------------------------|--|------------------------------|---------------------|----------------|----------------------------------|--------------------------|------------|------------------------------|---------------------|----------------|
| | | | 最大 Max. | 最小 min. | | 無螺紋 Plain end | 有螺紋 Screwed | | 最大 Max. | 最小 min. | | 無螺紋 Plain end | 有螺紋 Screwed |
| | | | mm | mm | | | | | | | | | |
| 1/2 | 15 | Light | 21.4 | 21.0 | 2.0 | 0.947 | 0.956 | Medium | 21.7 | 21.1 | 2.60 | 1.21 | 1.22 |
| | | Heavy | | | | | | Heavy | | | 3.20 | 1.44 | 1.45 |
| 3/4 | 20 | Light | 26.9 | 26.4 | 2.30 | 1.38 | 1.39 | Medium | 27.2 | 26.6 | 2.60 | 1.56 | 1.57 |
| | | Heavy | | | | | | Heavy | | | 3.20 | 1.87 | 1.88 |
| 1 | 25 | Light | 33.8 | 33.2 | 2.60 | 1.98 | 2.00 | Medium | 34.2 | 33.4 | 3.20 | 2.41 | 2.43 |
| | | Heavy | | | | | | Heavy | | | 4.00 | 2.94 | 2.96 |
| 1 1/4 | 32 | Light | 42.5 | 41.9 | 2.60 | 2.54 | 2.57 | Medium | 42.9 | 42.1 | 3.20 | 3.10 | 3.13 |
| | | Heavy | | | | | | Heavy | | | 4.00 | 3.80 | 3.83 |
| 1 1/2 | 40 | Light | 48.4 | 47.8 | 2.90 | 3.23 | 3.27 | Medium | 48.8 | 48.0 | 3.20 | 3.57 | 3.61 |
| | | Heavy | | | | | | Heavy | | | 4.00 | 4.38 | 4.42 |
| 2 | 50 | Light | 60.2 | 59.6 | 2.90 | 4.08 | 4.15 | Medium | 60.8 | 59.8 | 3.60 | 5.03 | 5.10 |
| | | Heavy | | | | | | Heavy | | | 4.50 | 6.19 | 6.26 |
| 2 1/2 | 65 | Light | 76.0 | 75.2 | 3.20 | 5.71 | 5.83 | Medium | 76.6 | 75.4 | 3.60 | 6.43 | 6.55 |
| | | Heavy | | | | | | Heavy | | | 4.50 | 7.93 | 8.05 |
| 3 | 80 | Light | 88.7 | 87.9 | 3.20 | 6.72 | 6.89 | Medium | 89.5 | 88.1 | 4.00 | 8.37 | 8.54 |
| | | Heavy | | | | | | Heavy | | | 5.00 | 10.3 | 10.5 |
| 4 | 100 | Light | 113.9 | 113.0 | 3.60 | 9.75 | 10.0 | Medium | 114.9 | 113.3 | 4.50 | 12.2 | 12.5 |
| | | Heavy | | | | | | Heavy | | | 5.40 | 14.5 | 14.8 |
| 5 | 125 | | - | | | | | Medium | 140.6 | 138.7 | 5.00 | 16.6 | 17.1 |
| | | Heavy | | | | | | Heavy | | | 5.40 | 17.9 | 18.4 |
| 6 | 150 | | - | | | | | Medium | 166.1 | 164.1 | 5.00 | 19.7 | 20.3 |
| | | Heavy | | | | | | Heavy | | | 5.40 | 21.3 | 21.9 |
| 8 | 200 | | - | | | | | Medium | 218.5 | 214.1 | 6.0 | 31.1 | - |
| | | Heavy | | | | | | Heavy | | | 6.4 | 33.1 | - |
| 厚度公差 Thickness Tolerances | | 輕 級 : +不限制 , - 8% 中級及重級 : +不限制 , - 10% | | Light Class : +not specified, -8% Medium & : +not specified, Heavy Class -10% | | | | | | | | | |
| 備註 Note | | ❶ 此單位重量為包括接頭之單位重量。 | | | | | | ❶ The Unit Mass Includes Socket. | | | | | |



配管用鋼管

STEEL PIPES FOR ORDINARY PIPING

配管用管—鑫陽規格BSA, BSB級黑鋼管、後熱浸鍍鋅銲接鋼管及預熱浸鍍鋅銲接鋼管
Shin Yang Standard (SYS) for BSA, BSB Class, Black Post-Hot-Dip Zinc-Coated Steel Pipes and Pre-Hot-Dip Galvanized Steel Pipes

| 標稱尺度 Nominal Size | | 級別 Class | 鋼管外徑 Outside Diameter | | 厚度 Wall Thick- ness | 單位重量 Unit Mass | | 級別 Class | 鋼管外徑 Outside Diameter | | 厚度 Wall Thick- ness | 單位重量 Unit Mass | |
|------------------------------|-----|--------------------|--------------------------|----------------------------------|------------------------------|---------------------|-----------------------------|-------------|--------------------------|------------|------------------------------|---------------------|-----------------------------|
| | | | 最大 Max. | 最小 min. | | 無螺紋 Plain end | 有螺紋 ^① Screwed | | 最大 Max. | 最小 min. | | 無螺紋 Plain end | 有螺紋 ^① Screwed |
| | | | mm | mm | | | | | mm | mm | | | |
| 1/2 | 15 | BSA | 21.4 | 21.0 | 1.90 | 0.904 | 0.913 | BSB | 21.7 | 21.1 | 2.60 | 1.21 | 1.22 |
| 3/4 | 20 | | 26.9 | 26.4 | 2.10 | 1.27 | 1.29 | | 27.2 | 26.6 | 2.90 | 1.72 | 1.74 |
| 1 | 25 | | 33.8 | 33.2 | 2.45 | 1.88 | 1.90 | | 34.2 | 33.4 | 3.25 | 2.45 | 2.48 |
| 1 1/4 | 32 | | 42.5 | 41.9 | 2.45 | 2.40 | 2.43 | | 42.9 | 42.1 | 3.60 | 3.45 | 3.50 |
| 1 1/2 | 40 | | 48.4 | 47.8 | 2.60 | 2.92 | 2.96 | | 48.8 | 48.0 | 4.10 | 4.48 | 4.53 |
| 2 | 50 | | 60.2 | 59.6 | 2.60 | 3.68 | 3.74 | | 60.8 | 59.8 | 4.10 | 5.68 | 5.78 |
| 2 1/2 | 65 | | 76.0 | 75.2 | 3.00 | 5.37 | 5.48 | | 76.6 | 75.4 | 4.50 | 7.93 | 8.05 |
| 3 | 80 | | 88.7 | 87.9 | 3.00 | 6.31 | 6.39 | | 89.5 | 88.1 | 4.50 | 9.36 | 9.55 |
| 4 | 100 | | 113.9 | 113.0 | 3.25 | 8.83 | 9.06 | | 114.9 | 113.3 | 4.50 | 12.20 | 12.50 |
| 5 | 125 | | 140.1 | 138.9 | 3.60 | 12.07 | 12.41 | | 140.6 | 138.7 | 4.50 | 15.00 | 15.42 |
| 6 | 150 | | 165.5 | 164.4 | 3.60 | 14.33 | 14.76 | | 166.1 | 164.1 | 4.50 | 17.82 | 18.36 |
| 8 | 200 | | 217.0 | 215.3 | 4.50 | 23.49 | - | | 218.5 | 214.1 | 6.00 | 31.12 | - |
| 厚度公差 Thickness Tolerances | | +不限制， -5% | | +not specified, -5% | | | | | | | | | |
| 備註 Note | | ① 此單位重量為包括接頭之單位重量。 | | ① The Unit Mass Includes Socket. | | | | | | | | | |

結構用鋼管

STRUCTURAL STEEL PIPES

結構用管—CNS 4435/JIS G3444一般結構用碳鋼鋼管
CNS 4435 G3102 Carbon Steel Pipes for General Structures.
JIS G3444 Carbon Steel Tubes for General Structural Purposes.

| 外徑 Outside Diameter | 厚度 Wall Thickness | 單位重量 Unit Mass | 外徑 Outside Diameter | 厚度 Wall Thickness | 單位重量 Unit Mass |
|---|----------------------|--|------------------------|--|-------------------|
| mm | mm | kg/m | mm | mm | kg/m |
| 21.7 | 2.0 | 0.972 | 89.1 | 2.8 | 5.96 |
| 27.2 | 2.0 | 1.24 | | 3.2 | 6.78 |
| 34.0 | 2.3 | 1.41 | 114.3 | 3.2 | 8.77 |
| | 2.3 | 1.80 | | 3.5 | 9.58 |
| 42.7 | 2.3 | 2.29 | | 4.5 | 12.2 |
| | 2.5 | 2.48 | | 3.6 | 12.1 |
| 48.6 | 2.3 | 2.63 | 139.8 | 4.0 | 13.4 |
| | 2.5 | 2.84 | | 4.5 | 15.0 |
| | 2.8 | 3.16 | | 6.0 | 19.8 |
| | 3.2 | 3.58 | | 4.5 | 17.8 |
| 60.5 | 2.3 | 3.30 | 165.2 | 5.0 | 19.8 |
| | 3.2 | 4.52 | | 6.0 | 23.6 |
| 76.3 | 4.0 | 5.57 | 190.7 | 4.5 | 20.7 |
| | 2.8 | 5.08 | | 5.0 | 22.9 |
| | 3.2 | 5.77 | | 6.0 | 27.3 |
| | 4.0 | 7.13 | | 4.5 | 23.5 |
| | | | 216.3 | 6.0 | 31.1 |
| 外徑許可差 Tolerances of Outside Diameter | | 外徑未滿50mm : ±0.5mm ; 外徑50mm 以上 : ±1% | | OD under 50mm : ±0.5mm ; OD 50mm and above : ±1% | |
| 厚度公差 Thickness Tolerances | | 厚度未滿3mm : ±0.3mm ; 厚度3mm 以上、未滿12mm : ±10% | | Thickness under 3mm : ±0.3mm ; Thickness 3mm and above, under 12mm : ±10% | |

結構用管—CNS 4437/JIS G3445機械結構用碳鋼鋼管
CNS 4437 G3103 Carbon Steel Pipes for Machine Structures.
JIS G3445 Carbon Steel Tubes for Machine Structural Purposes.

| 外徑 Outside Diameter | | 標稱厚度 Nominal Wall Thickness | | | | | | | | |
|---|-------|--|------|--|------|------|------|------|------|------|
| in | mm | 1.10 | 1.20 | 1.30 | 1.40 | 1.50 | 1.60 | 1.80 | 2.00 | 2.20 |
| 5/8 | 15.88 | | | | | | | | | |
| 3/4 | 19.10 | | | | | | | | | |
| 1 | 25.40 | | | | | | | | | |
| 1 1/4 | 31.80 | | | | | | | | | |
| 1 1/2 | 35.00 | | | | | | | | | |
| | 38.10 | | | | | | | | | |
| 2 | 45.00 | | | | | | | | | |
| | 50.80 | | | | | | | | | |
| 2 1/2 | 63.50 | | | | | | | | | |
| 外徑許可差 Tolerances of Outside Diameter | | 外徑未滿50mm : ±0.5mm ; 外徑50mm 以上 : ±1% | | OD under 50mm : ±0.5mm ; OD 50mm and above : ±1% | | | | | | |
| 厚度公差 Thickness Tolerances | | 厚度未滿3mm : ±0.3mm ; 厚度3mm 以上 : ±10% | | Thickness under 3mm : ±0.3mm ; Thickness 3mm and above : ±10% | | | | | | |
| 備考 Remarks | | 本公司所能供應之種類為 STKM11A 及 STKM13A | | We offer STKM11A and STKM13A tubes for above specifications. | | | | | | |



結構用鋼管

STRUCTURAL STEEL PIPES

矩形管—CNS 7141/JIS G 3466/SYS一般結構用矩形鋼管

CNS 7141 G3134 Carbon Steel Rectangular Pipes for General Structures.

JIS G3466 Carbon Steel Square Pipes for General Structural Purposes.

Shin Yang Standard (SYS) for Carbon Steel Rectangular Pipes.

方形管 Square Pipe

| 邊長(mm) Side Length | 厚度 Wall Thickness (mm) | | | | | | | | | | | | | | | | | | | | |
|------------------------------|--------------------------------------|------|------|-----|-----|-----|------|------|------|--|-----|-----|------|------|-----|-----|-----|-----|------|-----|--|
| | 1.1 | 1.26 | 1.38 | 1.5 | 1.6 | 1.7 | 1.80 | 1.85 | 1.90 | 1.95 | 2.0 | 2.3 | 2.43 | 2.95 | 3.2 | 4.0 | 4.5 | 5.0 | 5.65 | 6.0 | |
| 16×16 | | | | | | | | | | | | | | | | | | | | | |
| 19×19 | | | | | | | | | | | | | | | | | | | | | |
| 20×20 | | | | | | | | | | | | | | | | | | | | | |
| 25×25 | | | | | | | | | | | | | | | | | | | | | |
| 30×30 | | | | | | | | | | | | | | | | | | | | | |
| 38×38 | | | | | | | | | | | | | | | | | | | | | |
| 40×40 | | | | | | | | | | | | | | | | | | | | | |
| 50×50 | | | | | | | | | | | | | | | | | | | | | |
| 60×60 | | | | | | | | | | | | | | | | | | | | | |
| 65×65 | | | | | | | | | | | | | | | | | | | | | |
| 75×75 | | | | | | | | | | | | | | | | | | | | | |
| 89×89 | | | | | | | | | | | | | | | | | | | | | |
| 100×100 | | | | | | | | | | | | | | | | | | | | | |
| 125×125 | | | | | | | | | | | | | | | | | | | | | |
| 150×150 | | | | | | | | | | | | | | | | | | | | | |
| 厚度公差 Thickness Tolerances | 厚度未滿3mm : ±0.3mm ; 厚度3mm以上 : ±10% | | | | | | | | | Thickness under 3mm : ±0.3mm ; Thickness 3mm and above : ±10% | | | | | | | | | | | |
| 備考 Remarks | 依據CNS 7141 G3134 , JIS G3466規範供應 | | | | | | | | | Supplied according to CNS 7141 G3134, JIS G3466 Specifications. | | | | | | | | | | | |

矩形管 Rectangular Pipe

| 邊長(mm) Side Length | 厚度 Wall Thickness (mm) | | | | | | | | | | | | | | | | | | | | |
|------------------------------|--------------------------------------|------|------|-----|-----|-----|------|------|------|--|-----|-----|------|------|-----|-----|-----|-----|------|-----|--|
| | 1.1 | 1.26 | 1.38 | 1.5 | 1.6 | 1.7 | 1.80 | 1.85 | 1.90 | 1.95 | 2.0 | 2.3 | 2.43 | 2.95 | 3.2 | 4.0 | 4.5 | 5.0 | 5.65 | 6.0 | |
| 30×15 | | | | | | | | | | | | | | | | | | | | | |
| 30×20 | | | | | | | | | | | | | | | | | | | | | |
| 38×25 | | | | | | | | | | | | | | | | | | | | | |
| 40×20 | | | | | | | | | | | | | | | | | | | | | |
| 50×20 | | | | | | | | | | | | | | | | | | | | | |
| 50×25 | | | | | | | | | | | | | | | | | | | | | |
| 60×30 | | | | | | | | | | | | | | | | | | | | | |
| 80×40 | | | | | | | | | | | | | | | | | | | | | |
| 100×50 | | | | | | | | | | | | | | | | | | | | | |
| 125×75 | | | | | | | | | | | | | | | | | | | | | |
| 150×100 | | | | | | | | | | | | | | | | | | | | | |
| 厚度公差 Thickness Tolerances | 厚度未滿3mm : ±0.3mm ; 厚度3mm以上 : ±10% | | | | | | | | | Thickness under 3mm : ±0.3mm ; Thickness 3mm and above : ±10% | | | | | | | | | | | |
| 備考 Remarks | 依據CNS 7141 G3134 , JIS G3466規範供應 | | | | | | | | | Supplied according to CNS 7141 G3134, JIS G3466 Specifications. | | | | | | | | | | | |

電線用鋼管

RIGID STEEL CONDUIT

電線用管—CNS 2606

CNS 2606 C4060 Galvanized steel conduits for electrical wires and cables



| 厚鋼電線管 Thick Rigid Steel Conduit Tubes | | | | 薄鋼電線管 Thin Rigid Steel Conduit Tubes | | | | 無螺紋電線管 Threadless Rigid Steel Conduit Tubes | | | |
|--|----------|-----------------|-------------------------|--|----------|-----------------|------------|---|----------|-----------------|------------|
| 管之稱呼 Designation | 外徑 OD | 厚度 Thickness | 重量 ^① Mass | 管之稱呼 Designation | 外徑 OD | 厚度 Thickness | 重量 Mass | 管之稱呼 Designation | 外徑 OD | 厚度 Thickness | 重量 Mass |
| | mm | mm | kg/m | | mm | mm | kg/m | | mm | mm | kg/m |
| G16 | 21.0 | 2.3 | 1.06 | C19 | 19.1 | 1.6 | 0.690 | E19 | 19.1 | 1.2 | 0.530 |
| G22 | 26.5 | 2.3 | 1.37 | C25 | 25.4 | 1.6 | 0.939 | E25 | 25.4 | 1.2 | 0.716 |
| G28 | 33.3 | 2.5 | 1.90 | C31 | 31.8 | 1.6 | 1.19 | E31 | 31.8 | 1.4 | 1.05 |
| G36 | 41.9 | 2.5 | 2.43 | C39 | 38.1 | 1.6 | 1.44 | E39 | 38.1 | 1.4 | 1.27 |
| G42 | 47.8 | 2.5 | 2.79 | C51 | 50.8 | 1.6 | 1.94 | E51 | 50.8 | 1.4 | 1.71 |
| G54 | 59.6 | 2.8 | 3.92 | C63 | 63.5 | 2.0 | 3.03 | E63 | 63.5 | 1.6 | 2.44 |
| G70 | 75.2 | 2.8 | 5.00 | C75 | 76.2 | 2.0 | 3.66 | E75 | 76.2 | 1.8 | 3.30 |
| G82 | 87.9 | 2.8 | 5.88 | | | | | | | | |
| G104 | 113.4 | 3.5 | 9.48 | | | | | | | | |
| 外徑許可差(Tolerances on OD) G82以下(G82 and under) : ±0.3mm G104以上(G92 and above) : ±0.4mm | | | | 外徑許可差(Tolerances on OD) C51以下(C51 and under) : ±0.2mm C63以上(C63 and above) : ±0.35mm | | | | 外徑許可差(Tolerances on OD) E51以下(E51 and under) : ±0.15mm E63以上(E63 and above) : ±0.25mm | | | |
| 厚度公差 Thickness Tolerances | | | | +無規定, -7% | | | | +not specified, -7% | | | |
| 備註 Note | | | | ① 此重量為不包含螺紋部份的重量。① The mass doesn't include threaded part. | | | | | | | |



電線用鋼管

RIGID STEEL CONDUIT

電線用管—ANSI C80.1 電線用鋼管(鍍鋅)

ANSI C80.1 Rigid Steel Conduit-Zinc Coated.

| 標稱管徑 Nominal Diameter | 標稱內徑 Nominal Inside Diameter | 外徑 Outside Diameter | 標稱壁厚 Nominal Wall Thickness | 包括接頭每十支之最小重量 Min. Weight of Ten Unit Lengths with Couplings Attached | |
|------------------------------|---------------------------------|------------------------|--------------------------------|---|------------------------------|
| | | | | | in |
| ½ | 16.1 | 21.3 | 2.64 | 35.83 | |
| ¾ | 21.2 | 26.7 | 2.72 | 47.63 | |
| 1 | 27.0 | 33.4 | 3.20 | 69.40 | |
| 1¼ | 35.4 | 42.2 | 3.38 | 91.17 | |
| 1½ | 41.2 | 48.3 | 3.51 | 112.95 | |
| 2 | 52.9 | 60.3 | 3.71 | 150.60 | |
| 2½ | 63.2 | 73.0 | 4.90 | 239.05 | |
| 3 | 78.5 | 88.9 | 5.21 | 309.63 | |
| 4 | 102.9 | 114.3 | 5.72 | 441.04 | |
| 5 ^① | 128.9 | 141.3 | 6.22 | 595.85 | |
| 6 | 154.8 | 168.3 | 6.76 | 791.67 | |
| 厚度公差 Thickness Tolerances | | +無限制， -12.5% | | | +not specified, -12.5% |
| 備註 Note | | ① 5" (含)以上尺寸無絞牙。 | | | ① 5" and above don't thread. |



配管用鋼管

STEEL PIPES FOR ORDINARY PIPING

配管用管—AS 1074 配管用鋼管

AS 1074 Steel Tubes and Tubulars for Ordinary Service

| 標稱尺度 Nominal Size | 級別 Class | 鋼管外徑 Outside Diameter | | 厚度 Wall Thickness | 單位重量 Unit Mass | | 級別 Class | 鋼管外徑 Outside Diameter | | 厚度 Wall Thickness | 單位重量 Unit Mass | | |
|------------------------------|-------------|---|------------|----------------------------------|-------------------|--|-------------|--------------------------|------------|----------------------|-------------------|-----------------------------|------|
| | | 最大 Max. | 最小 min. | | 無螺紋 Plain end | 有螺紋 ^① Screwed | | 最大 Max. | 最小 min. | | 無螺紋 Plain end | 有螺紋 ^① Screwed | |
| | | mm | mm | | | | | | | | | | mm |
| NPS | DN | | | | | | | | | | | | |
| ½ | 15 | Light | 21.4 | 21.0 | 2.00 | 0.947 | 0.956 | Medium | 21.7 | 21.1 | 2.60 | 1.21 | 1.22 |
| | | Heavy | | | | | | Heavy | | | 3.20 | 1.44 | 1.45 |
| ¾ | 20 | Light | 26.9 | 26.4 | 2.30 | 1.38 | 1.39 | Medium | 27.2 | 26.6 | 2.60 | 1.56 | 1.57 |
| | | Heavy | | | | | | Heavy | | | 3.20 | 1.87 | 1.88 |
| 1 | 25 | Light | 33.8 | 33.2 | 2.60 | 1.98 | 2.00 | Medium | 34.2 | 33.4 | 3.20 | 2.41 | 2.43 |
| | | Heavy | | | | | | Heavy | | | 4.00 | 2.94 | 2.96 |
| 1¼ | 32 | Light | 42.5 | 41.9 | 2.60 | 2.54 | 2.57 | Medium | 42.9 | 42.1 | 3.20 | 3.10 | 3.13 |
| | | Heavy | | | | | | Heavy | | | 4.00 | 3.80 | 3.83 |
| 1½ | 40 | Light | 48.4 | 47.8 | 2.90 | 3.23 | 3.27 | Medium | 48.8 | 48.0 | 3.20 | 3.57 | 3.61 |
| | | Heavy | | | | | | Heavy | | | 4.00 | 4.38 | 4.42 |
| 2 | 50 | Light | 60.2 | 59.6 | 2.90 | 4.08 | 4.15 | Medium | 60.8 | 59.8 | 3.60 | 5.03 | 5.10 |
| | | Heavy | | | | | | Heavy | | | 4.50 | 6.19 | 6.26 |
| 2½ | 65 | Light | 76.0 | 75.2 | 3.20 | 5.71 | 5.83 | Medium | 76.6 | 75.4 | 3.60 | 6.43 | 6.55 |
| | | Heavy | | | | | | Heavy | | | 4.50 | 7.93 | 8.05 |
| 3 | 80 | Light | 88.7 | 87.9 | 3.20 | 6.72 | 6.89 | Medium | 89.5 | 88.1 | 4.00 | 8.37 | 8.54 |
| | | Heavy | | | | | | Heavy | | | 5.00 | 10.3 | 10.5 |
| 4 | 100 | Light | 113.9 | 113.0 | 3.60 | 9.75 | 10.0 | Medium | 114.9 | 113.3 | 4.50 | 12.2 | 12.5 |
| | | Heavy | | | | | | Heavy | | | 5.40 | 14.5 | 14.8 |
| 5 | 125 | | | | | | | Medium | 140.6 | 138.7 | 5.00 | 16.6 | 17.1 |
| | | | | | | | | Heavy | | | 5.40 | 17.9 | 18.4 |
| 6 | 150 | | | | | | | Medium | 166.1 | 164.1 | 5.00 | 19.7 | 20.3 |
| | | | | | | | | Heavy | | | 5.40 | 21.3 | 21.9 |
| | | | | | | | | Heavy | | | 6.40 | 33.1 | - |
| 厚度公差 Thickness Tolerances | | 輕 級：+無限制， -8 % 中級及重級：+無限制， -10 % | | Light Class | | ：+unlimited, -8 % Medium & Heavy Class | | ：+unlimited, -10 % | | | | | |
| 備註 Note | | ① 此單位重量為包括接頭之單位重量。 | | ① The Unit Mass Includes Socket. | | | | | | | | | |



STRUCTURAL STEEL PIPES

結構用管—AS 1163一般結構用碳鋼鋼管

AS 1163 Cold-Formed Structural Steel Hollow Section—Circular Hollow Sections

圓管 CHR

| 外徑 Outside Diameter mm | 厚度 Wall Thickness mm | 單位重量 Unit Mass kg/m | 外徑 Outside Diameter mm | 厚度 Wall Thickness mm | 單位重量 Unit Mass kg/m | 外徑 Outside Diameter mm | 厚度 Wall Thickness mm | 單位重量 Unit Mass kg/m |
|---|-------------------------------|------------------------------|---------------------------------|-------------------------------|------------------------------|-----------------------------------|-------------------------------|------------------------------|
| 21.3 | 2.6 | 1.20 | 76.1 | 2.3 | 4.19 | 139.7 | 3.0 | 10.1 |
| | 3.2 | 1.43 | | 3.2 | 5.75 | | 3.5 | 11.8 |
| | 3.6 | 1.57 | | 3.6 | 6.44 | | 5.0 | 16.6 |
| 26.9 | 2.6 | 1.56 | | 4.5 | 7.95 | 5.4 | 17.9 | |
| | 3.2 | 1.87 | | 5.9 | 10.2 | 3.0 | 12.0 | |
| | 4.0 | 2.26 | | 2.6 | 5.53 | 3.5 | 13.9 | |
| 33.7 | 3.2 | 2.41 | 88.9 | 3.2 | 6.76 | 165.1 | 5.0 | 19.7 |
| | 4.0 | 2.93 | | 4.0 | 8.38 | | 5.4 | 21.3 |
| | 4.5 | 3.24 | | 4.8 | 9.96 | | 4.8 | 19.4 |
| 42.4 | 3.2 | 3.09 | 114.3 | 5.0 | 10.3 | 168.3 | 6.4 | 25.6 |
| | 4.0 | 3.79 | | 5.5 | 11.3 | | 7.1 | 28.2 |
| | 4.9 | 4.53 | | 5.9 | 12.1 | | 4.8 | 25.4 |
| 48.3 | 3.2 | 3.56 | 114.3 | 3.2 | 8.77 | 219.1 | 6.4 | 33.6 |
| | 4.0 | 4.37 | | 3.6 | 9.83 | | - | - |
| | 5.4 | 5.71 | | 4.5 | 12.2 | | - | - |
| 60.3 | 3.6 | 5.03 | | 4.8 | 13.0 | - | - | |
| | 4.5 | 6.19 | | 5.4 | 14.5 | - | - | |
| | 5.4 | 7.31 | | 6.0 | 16.0 | - | - | |
| 外徑許可差 Tolerances of Outside Diameter | | | ±1%，但不可小於±0.5mm | | | ±1%，with a minimum of ±0.5mm | | |
| 厚度公差 Thickness Tolerances | | | ±10% | | | 重量公差 Weight Tolerances - 4% | | |

結構用管—AS 1163一般結構用矩形鋼管

AS 1163 Cold-Formed Structural Steel Hollow Section—Square Hollow Section

方形管 SHS

| 邊長 Side Length mm | 厚度 Thickness mm | 單位重量 Unit Mass kg/m | 邊長 Side Length mm | 厚度 Thickness mm | 單位重量 Unit Mass kg/m | 邊長 Side Length mm | 厚度 Thickness mm | 單位重量 Unit Mass kg/m | 邊長 Side Length mm | 厚度 Thickness mm | 單位重量 Unit Mass kg/m |
|---|-----------------------|---------------------------|-------------------------|-----------------------|---------------------------|-----------------------------------|-----------------------|---------------------------|-------------------------|-----------------------|---------------------------|
| 16x16 | 1.2 | 0.53 | 40x40 | 1.6 | 1.88 | 60x60 | 1.6 | 2.88 | 89x89 | 2.0 | 5.38 |
| | 1.6 | 0.67 | | 2.0 | 2.31 | | 2.0 | 3.56 | | 2.5 | 6.66 |
| 19x19 | 1.2 | 0.64 | | 2.5 | 2.82 | | 2.5 | 4.39 | | 3.0 | 7.92 |
| | 1.6 | 0.82 | | 3.0 | 3.30 | | 3.0 | 5.19 | | 3.5 | 9.06 |
| 20x20 | 1.2 | 0.68 | | 3.5 | 3.68 | | 3.5 | 5.88 | | 4.0 | 10.25 |
| | 1.6 | 0.87 | | 4.0 | 4.09 | | 4.0 | 6.60 | | 5.0 | 12.50 |
| | 2.0 | 1.05 | 4.5 | 4.47 | 4.5 | 7.30 | 2.0 | 6.07 | | | |
| 25x25 | 1.2 | 0.87 | 5.0 | 4.82 | 5.0 | 7.96 | 2.5 | 7.53 | | | |
| | 1.6 | 1.12 | 1.6 | 2.38 | 1.6 | 3.13 | 3.0 | 8.96 | | | |
| | 2.0 | 1.36 | 2.0 | 2.93 | 2.0 | 3.88 | 3.5 | 10.28 | | | |
| | 2.5 | 1.64 | 2.5 | 3.60 | 2.5 | 4.78 | 4.0 | 11.60 | | | |
| 30x30 | 1.6 | 1.38 | 50x50 | 3.0 | 4.25 | 65x65 | 3.0 | 5.66 | 100x100 | 5.0 | 14.20 |
| | 2.0 | 1.68 | | 3.5 | 4.78 | | 3.5 | 6.43 | | 3.0 | 11.31 |
| | 2.5 | 2.03 | | 4.0 | 5.35 | | 4.0 | 7.23 | | 3.5 | 13.02 |
| 35x35 | 1.6 | 1.63 | 75x75 | 4.5 | 5.89 | 125x125 | 4.5 | 8.00 | 150x150 | 4.0 | 14.80 |
| | 2.0 | 1.99 | | 5.0 | 6.39 | | 5.0 | 8.75 | | 5.0 | 18.20 |
| | 2.5 | 2.42 | | 2.0 | 4.50 | | 2.0 | 4.50 | | 3.0 | 13.67 |
| | 3.0 | 2.83 | | 2.5 | 5.56 | | 2.5 | 5.56 | | 3.5 | 15.77 |
| | 3.5 | 3.13 | | 3.0 | 6.60 | | 3.0 | 6.60 | | 4.0 | 17.91 |
| 4.0 | 3.46 | 3.5 | 7.53 | 3.5 | 7.53 | 4.0 | 17.91 | 4.0 | 17.91 | | |
| 外徑許可差 Tolerances of Outside Diameter | | | ±1%，但不可小於±0.5mm | | | ±1%，with a minimum of ±0.5mm | | | | | |
| 厚度公差 Thickness Tolerances | | | ±10% | | | 重量公差 Weight Tolerances - 4% | | | | | |

結構用管—AS 1163一般結構用矩形鋼管

AS 1163 Cold-Formed Structural Steel Hollow Section—Rectangular Hollow Section

矩形管 RHS

| 邊長 Side Length mm | 厚度 Thickness mm | 單位重量 Unit Mass kg/m | 邊長 Side Length mm | 厚度 Thickness mm | 單位重量 Unit Mass kg/m | 邊長 Side Length mm | 厚度 Thickness mm | 單位重量 Unit Mass kg/m | 邊長 Side Length mm | 厚度 Thickness mm | 單位重量 Unit Mass kg/m |
|---|-----------------------|---------------------------|-------------------------|-----------------------|---------------------------|-----------------------------------|-----------------------|---------------------------|-------------------------|-----------------------|---------------------------|
| 38x25 | 1.2 | 1.11 | 70x50 | 1.6 | 2.88 | 76x38 | 1.6 | 2.73 | 125x75 | 2.5 | 7.53 |
| | 1.6 | 1.45 | | 2.0 | 3.56 | | 2.0 | 3.37 | | 3.5 | 8.96 |
| | 2.0 | 1.77 | | 2.5 | 4.39 | | 2.5 | 4.15 | | 3.0 | 10.28 |
| | 2.5 | 2.15 | | 3.0 | 5.19 | 1.6 | 2.88 | 4.5 | 11.60 | | |
| 50x25 | 1.2 | 1.34 | | 3.5 | 5.88 | 80x40 | 2.0 | 3.56 | 150x50 | 5.0 | 14.20 |
| | 1.6 | 1.75 | | 4.0 | 6.60 | | 2.5 | 4.39 | | 2.0 | 6.07 |
| | 2.0 | 2.15 | 4.5 | 7.30 | 3.0 | | 5.19 | 2.5 | | 7.53 | |
| | 2.5 | 2.62 | 5.0 | 7.96 | 3.5 | 5.88 | 3.0 | 8.96 | | | |
| 60x30 | 1.2 | 1.62 | 75x25 | 1.6 | 2.38 | 100x50 | 4.0 | 6.60 | 5.0 | 14.41 | |
| | 1.6 | 2.13 | | 2.0 | 2.93 | | 4.5 | 7.30 | | 3.0 | 11.31 |
| | 2.0 | 2.62 | | 2.5 | 3.60 | | 5.0 | 7.96 | | 3.5 | 13.02 |
| 65x35 | 1.6 | 2.38 | | 3.0 | 4.25 | 75x50 | 2.0 | 4.50 | 5.0 | 18.20 | |
| | 2.0 | 2.93 | | 3.5 | 4.78 | | 2.5 | 5.56 | | | |
| | 2.5 | 3.60 | | 4.0 | 5.35 | | 3.0 | 6.60 | | | |
| | 3.0 | 4.25 | 1.6 | 3.00 | 3.5 | 7.53 | | | | | |
| 75x50 | 3.5 | 4.78 | 2.0 | 3.72 | 4.0 | 8.49 | 5.0 | 10.30 | | | |
| | 4.0 | 5.35 | 2.5 | 4.58 | 3.0 | 5.42 | | | | | |
| | | | 3.5 | 6.16 | | | | | | | |
| | | | 4.0 | 6.92 | | | | | | | |
| | | | 4.5 | 7.65 | | | | | | | |
| | | | 5.0 | 8.36 | | | | | | | |
| | | | | | | | | | | | |
| 外徑許可差 Tolerances of Outside Diameter | | | ±1%，但不可小於±0.5mm | | | ±1%，with a minimum of ±0.5mm | | | | | |
| 厚度公差 Thickness Tolerances | | | ±10% | | | 重量公差 Weight Tolerances - 4% | | | | | |

結構用管—SYS 1450 C350預熱浸鍍鋅橢圓結構鋼管

SYS 1450 Grade C350, Pre-Hot-Dip Zinc-Coated, Steel Cattle Rail (Oval Rails) for Structural Purposes.

橢圓管 Cattle Rail Pipes (Oval Rails)

| 邊長 Side Length mm | 厚度 Thickness mm | 單位重量 Unit Mass kg/m | 邊長 Side Length mm | 厚度 Thickness mm | 單位重量 Unit Mass kg/m | 邊長 Side Length mm | 厚度 Thickness mm | 單位重量 Unit Mass kg/m |
|------------------------------------|-----------------------|---------------------------|----------------------------------|-----------------------|---------------------------|--|-----------------------|---------------------------|
| 59x29 | 1.6 | 1.85 | 97x42 | 1.6 | 2.98 | 120x48 | 1.6 | 3.64 |
| | 2.0 | 2.29 | | 2.0 | 3.70 | | 2.0 | 4.53 |
| | 2.5 | 2.83 | | 2.5 | 4.59 | | 2.5 | 5.63 |
| | 3.0 | 3.36 | | 3.0 | 5.48 | | 3.0 | 6.72 |
| 79x39 | 1.6 | 2.48 | 115x42 | 1.6 | 3.43 | | | |
| | 2.0 | 3.08 | | 2.0 | 4.27 | | | |
| | 2.5 | 3.82 | | 2.5 | 5.30 | | | |
| | 3.0 | 4.55 | | 3.0 | 6.32 | | | |
| 邊長許可差 Tolerances of side length | | | 邊長50mm或以下：±0.5mm 邊長大於50mm：±1% | | | Side length 50mm and under : ±0.5mm Side length over 50mm : ±1% | | |
| 厚度公差 Thickness Tolerances | | | ±10% | | | 重量公差 Weight Tolerances -10% | | |
| 備註 Remark | | | 預熱浸鍍鋅鋼管厚度可至5.0mm | | | The maximum wall thickness of pre-galvanized pipe is 5.0mm | | |



STEEL PIPES FOR ORDINARY PIPING

配管用管—ASTM A53 銲接鋼管

ASTM A53 Pipe, Steel, Black and Hot-Dipped, Zinc-Coated, Welded

| 標稱管徑 Nominal Diameter | | 鋼管外徑 Outside Diameter | | 標稱厚度 Nominal Wall Thickness | | 標稱重量(無螺紋) Nominal Mass (Plain End) | | 標稱厚度 號數 Schedule No. |
|------------------------------|--|--------------------------|--|--------------------------------|-------|---------------------------------------|-------|-------------------------------|
| NPS | DN | in | mm | in | mm | lb/ft | kg/m | |
| ½ | 15 | 0.840 | 21.3 | 0.083 | 2.11 | 0.67 | 1.00 | 10 |
| | | | | 0.109 | 2.77 | 0.85 | 1.27 | 40 |
| | | | | 0.147 | 3.73 | 1.09 | 1.62 | 80 |
| ¾ | 20 | 1.050 | 26.7 | 0.083 | 2.11 | 0.86 | 1.28 | 10 |
| | | | | 0.113 | 2.87 | 1.13 | 1.69 | 40 |
| | | | | 0.154 | 3.91 | 1.48 | 2.20 | 80 |
| 1 | 25 | 1.315 | 33.4 | 0.109 | 2.77 | 1.40 | 2.09 | 10 |
| | | | | 0.133 | 3.38 | 1.68 | 2.50 | 40 |
| | | | | 0.179 | 4.55 | 2.17 | 3.24 | 80 |
| 1¼ | 32 | 1.660 | 42.2 | 0.109 | 2.77 | 1.81 | 2.70 | 10 |
| | | | | 0.140 | 3.56 | 2.27 | 3.39 | 40 |
| | | | | 0.191 | 4.85 | 3.00 | 4.47 | 80 |
| 1½ | 40 | 1.900 | 48.3 | 0.109 | 2.77 | 2.09 | 3.11 | 10 |
| | | | | 0.145 | 3.68 | 2.72 | 4.05 | 40 |
| | | | | 0.200 | 5.08 | 3.63 | 5.41 | 80 |
| 2 | 50 | 2.375 | 60.3 | 0.109 | 2.77 | 2.64 | 3.93 | 10 |
| | | | | 0.154 | 3.91 | 3.66 | 5.44 | 40 |
| | | | | 0.218 | 5.54 | 5.03 | 7.48 | 80 |
| 2½ | 65 | 2.875 | 73.0 | 0.120 | 3.05 | 3.53 | 5.26 | 10 |
| | | | | 0.203 | 5.16 | 5.80 | 8.63 | 40 |
| | | | | 0.120 | 3.05 | 4.33 | 6.45 | 10 |
| 3 | 80 | 3.500 | 88.9 | 0.216 | 5.49 | 7.58 | 11.29 | 40 |
| | | | | 0.120 | 3.05 | 5.61 | 8.36 | 10 |
| | | | | 0.237 | 6.02 | 10.80 | 16.07 | 40 |
| 4 | 100 | 4.500 | 114.3 | 0.250 | 6.35 | 11.36 | 16.90 | - |
| | | | | 0.281 | 7.14 | 12.67 | 18.87 | - |
| | | | | 0.312 | 7.92 | 13.97 | 20.76 | - |
| 5 | 125 | 5.563 | 141.3 | 0.337 | 8.56 | 15.00 | 22.32 | 80 |
| | | | | 0.134 | 3.40 | 7.77 | 11.57 | 10 |
| | | | | 0.258 | 6.55 | 14.63 | 21.77 | 40 |
| 6 | 150 | 6.625 | 168.3 | 0.261 | 7.14 | 15.87 | 23.62 | - |
| | | | | 0.312 | 7.92 | 17.51 | 25.05 | - |
| | | | | 0.344 | 8.74 | 19.19 | 28.57 | - |
| 8 | 200 | 8.625 | 219.1 | 0.375 | 9.52 | 20.80 | 30.94 | 80 |
| | | | | 0.134 | 3.40 | 9.29 | 13.84 | 10 |
| | | | | 0.280 | 7.11 | 18.99 | 28.26 | 40 |
| 10 | 250 | 10.750 | 273.0 | 0.312 | 7.92 | 21.06 | 31.32 | - |
| | | | | 0.344 | 8.74 | 23.10 | 34.39 | - |
| | | | | 0.375 | 9.52 | 25.05 | 37.28 | - |
| 12 | 300 | 12.750 | 323.8 | 0.148 | 3.76 | 13.40 | 19.96 | 10 |
| | | | | 0.250 | 6.35 | 22.38 | 33.31 | 20 |
| | | | | 0.322 | 8.18 | 28.58 | 42.55 | 40 |
| 10 | 250 | 10.750 | 273.0 | 0.344 | 8.74 | 30.45 | 45.34 | - |
| | | | | 0.365 | 9.27 | 33.07 | 49.20 | - |
| | | | | 0.438 | 11.13 | 35.67 | 53.08 | - |
| 10 | 250 | 10.750 | 273.0 | 0.219 | 5.56 | 24.65 | 36.67 | - |
| | | | | 0.250 | 6.35 | 28.06 | 41.75 | 20 |
| | | | | 0.279 | 7.09 | 31.23 | 46.49 | - |
| 10 | 250 | 10.750 | 273.0 | 0.307 | 7.80 | 34.27 | 51.01 | 30 |
| | | | | 0.344 | 8.74 | 38.27 | 56.96 | - |
| | | | | 0.365 | 9.27 | 40.52 | 60.29 | 40 |
| 10 | 250 | 10.750 | 273.0 | 0.438 | 11.13 | 48.28 | 71.87 | - |
| | | | | 0.500 | 12.70 | 54.79 | 81.52 | 60 |
| | | | | 0.250 | 6.35 | 33.41 | 49.71 | 20 |
| 12 | 300 | 12.750 | 323.8 | 0.281 | 7.14 | 37.46 | 55.75 | - |
| | | | | 0.312 | 7.92 | 41.48 | 61.69 | - |
| | | | | 0.330 | 8.38 | 43.81 | 65.18 | 30 |
| 12 | 300 | 12.750 | 323.8 | 0.344 | 8.74 | 45.62 | 67.90 | - |
| | | | | 0.375 | 9.52 | 49.61 | 73.78 | - |
| | | | | 0.406 | 10.31 | 53.57 | 79.70 | 40 |
| 12 | 300 | 12.750 | 323.8 | 0.375 | 9.52 | 49.61 | 73.78 | - |
| | | | | 0.438 | 11.13 | 57.65 | 85.82 | - |
| | | | | 0.500 | 12.70 | 65.48 | 97.43 | - |
| 厚度公差 Thickness Tolerances | +不限制， -12.5% | | +not specified, -12.5% | | | | | |
| 備考 Remarks | <ul style="list-style-type: none"> ASTM A53 區分為Grade A 與 Grade B 等2種產品等級。 Grade A的可生產尺寸為½"~12"；Grade B的可生產尺寸為½"~12"。 | | <ul style="list-style-type: none"> ASTM A53 classifies pipes into Grade A and B. Shin Yang's range of product dimensions : Grade A:½"~12" ; Grade B:½"~12" . | | | | | |

配管用管—EN10255 非合金銲接平口、絞牙鋼管

EN10255 non alloy steel tubes suitable for welding and threading.

| 標稱外徑 Specified Outside diameter D (mm) | 絞牙尺寸 Thread Size R | 外徑 Outside Diameter | | 中級 Medium series | | | 重級 Heavy series | | |
|---|---------------------------------|--|------------|-------------------------|---|--|-------------------------|---|--|
| | | 最大 max. | 最小 min. | 厚度 Wall Thickness | 單位重量 Mass per unit length of bare tube | | 厚度 Wall thickness | 單位重量 Mass per unit length of bare tube | |
| | | | | | 無螺紋 Plain end | 有螺紋 ¹ 及接頭 Threaded and Socketed | | 無螺紋 Plain end | 有螺紋 ¹ 及接頭 Threaded and Socketed |
| | | mm | mm | mm | kg/m | kg/m | mm | kg/m | kg/m |
| 21.3 | ½ | 21.8 | 21.0 | 2.6 | 1.21 | 1.22 | 3.2 | 1.44 | 1.45 |
| 26.9 | ¾ | 27.3 | 26.5 | 2.6 | 1.56 | 1.57 | 3.2 | 1.87 | 1.88 |
| 33.7 | 1 | 34.2 | 33.3 | 3.2 | 2.41 | 2.43 | 4.0 | 2.93 | 2.95 |
| 42.4 | 1¼ | 42.9 | 42.0 | 3.2 | 3.10 | 3.13 | 4.0 | 3.79 | 3.82 |
| 48.3 | 1½ | 48.8 | 47.9 | 3.2 | 3.56 | 3.60 | 4.0 | 4.37 | 4.41 |
| 60.3 | 2 | 60.8 | 59.7 | 3.6 | 5.03 | 5.10 | 4.5 | 6.19 | 6.26 |
| 76.1 | 2½ | 76.6 | 75.3 | 3.6 | 6.42 | 6.54 | 4.5 | 7.93 | 8.05 |
| 88.9 | 3 | 89.5 | 88.0 | 4.0 | 8.36 | 8.53 | 5.0 | 10.3 | 10.5 |
| 114.3 | 4 | 115.0 | 113.1 | 4.5 | 12.2 | 12.5 | 5.4 | 14.5 | 14.8 |
| 139.7 | 5 | 140.8 | 138.5 | 5.0 | 16.6 | 17.1 | 5.4 | 17.9 | 18.4 |
| 165.1 | 6 | 166.5 | 163.9 | 5.0 | 19.8 | 20.4 | 5.4 | 21.3 | 21.9 |
| 厚度公差 Thickness Tolerances | | 中級及重級：±10% | | | Medium & Heavy Class : ±10% | | | | |
| 重量公差 Weight Tolerances | | ±7.5% | | | | | | | |
| 備註 Note | | <ul style="list-style-type: none"> ¹ 此單位重量為包括接頭之單位重量。 ¹ The Unit Mass Includes Socket. | | | | | | | |



STEEL PIPES FOR ORDINARY PIPING

配管用管—EN10255 非合金鋁接平口、絞牙鋼管

EN10255 non alloy steel tubes suitable for welding and threading.

| 標稱外徑 Specified Outside diameter D (mm) | 絞牙尺寸 Thread Size R | 外徑 Outside Diameter | | 輕級 Light series (Type L) | | |
|---|---|------------------------|----------------------------|-------------------------------|---|--|
| | | 最大 max. mm | 最小 min. mm | 厚度 Wall thickness mm | 單位重量 Mass per unit length of bare tube | |
| | | | | | 無螺紋 Plain end kg/m | 有螺紋及接頭 ¹ Threaded and Socketed kg/m |
| 21.3 | ½ | 21.7 | 21.0 | 2.30 | 1.08 | 1.09 |
| 26.9 | ¾ | 27.1 | 26.4 | 2.30 | 1.40 | 1.41 |
| 33.7 | 1 | 34.0 | 33.2 | 2.90 | 2.20 | 2.22 |
| 42.4 | 1¼ | 42.7 | 41.9 | 2.90 | 2.82 | 3.85 |
| 48.3 | 1½ | 48.6 | 47.8 | 2.90 | 3.25 | 3.29 |
| 60.3 | 2 | 60.7 | 59.6 | 3.20 | 4.50 | 4.58 |
| 76.1 | 2½ | 76.0 | 75.2 | 3.20 | 5.57 | 5.78 |
| 88.9 | 3 | 88.7 | 87.9 | 3.20 | 6.76 | 6.93 |
| 114.3 | 4 | 113.9 | 113.0 | 3.60 | 9.83 | 10.10 |
| 139.7 | 5 | 140.8 | 138.5 | 4.50 | 15.0 | 15.50 |
| 165.1 | 6 | 166.5 | 163.9 | 4.50 | 17.8 | 18.40 |
| 厚度公差 Thickness Tolerances | 輕級：±10% | | Light series (Type L)：±10% | | | |
| 重量公差 Weight Tolerances | ±7.5% | | | | | |
| 備註 Note | ❶ 此單位重量為包括接頭之單位重量。 ❶ The Unit Mass Includes Socket. | | | | | |

配管用管—EN10255 非合金鋁接平口、絞牙鋼管

EN10255 non alloy steel tubes suitable for welding and threading.

| 標稱外徑 Specified Outside diameter D (mm) | 絞牙尺寸 Thread Size R | 外徑 Outside Diameter | | 輕級 Light series (Type L1) | | |
|---|---|------------------------|---|-------------------------------|---|--|
| | | 最大 max. mm | 最小 min. mm | 厚度 Wall thickness mm | 單位重量 Mass per unit length of bare tube | |
| | | | | | 無螺紋 Plain end kg/m | 有螺紋及接頭 ¹ Threaded and Socketed kg/m |
| 21.3 | ½ | 21.7 | 21.0 | 2.30 | 1.08 | 1.09 |
| 26.9 | ¾ | 27.1 | 26.4 | 2.30 | 1.39 | 1.40 |
| 33.7 | 1 | 34.0 | 33.2 | 2.90 | 2.20 | 2.22 |
| 42.4 | 1¼ | 42.7 | 41.9 | 2.90 | 2.82 | 2.85 |
| 48.3 | 1½ | 48.6 | 47.8 | 2.90 | 3.24 | 3.28 |
| 60.3 | 2 | 60.7 | 59.6 | 3.20 | 4.49 | 4.58 |
| 76.1 | 2½ | 76.0 | 75.2 | 3.20 | 5.73 | 5.78 |
| 88.9 | 3 | 89.41 | 87.9 | 3.60 | 7.55 | 6.93 |
| 114.3 | 4 | 114.9 | 113.0 | 4.00 | 10.80 | 10.10 |
| 厚度公差 Thickness Tolerances | 輕級：+不限制，-8% | | Light series (Type L1)：+not specified，-8% | | | |
| 重量公差 Weight Tolerances | +10%，-8% | | | | | |
| 備註 Note | ❶ 此單位重量為包括接頭之單位重量。 ❶ The Unit Mass Includes Socket. | | | | | |



STEEL PIPES FOR ORDINARY PIPING

配管用管—EN10255 非合金鍍接平口、絞牙鋼管

EN10255 non alloy steel tubes suitable for welding and threading.

| 標稱外徑 Specified Outside diameter D (mm) | 絞牙尺寸 Thread Size R | 外徑 Outside Diameter | | 輕級 Light series (Type L2) | | |
|---|--|------------------------|------------|------------------------------|---|---------------------------------------|
| | | 最大 max. | 最小 min. | 厚度 Wall thickness | 單位重量 Mass per unit length of bare tube | |
| | | | | | 無螺紋 Plain end | 有螺紋及接頭 Threaded and Socketed |
| | | mm | mm | mm | kg/m | kg/m |
| 21.3 | ½ | 21.4 | 21.0 | 2.00 | 0.947 | 0.956 |
| 26.9 | ¾ | 26.9 | 26.4 | 2.30 | 1.38 | 1.39 |
| 33.7 | 1 | 33.8 | 33.2 | 2.60 | 1.98 | 2.00 |
| 42.4 | 1¼ | 42.5 | 41.9 | 2.60 | 2.54 | 2.75 |
| 48.3 | 1½ | 48.4 | 47.8 | 2.90 | 3.23 | 3.27 |
| 60.3 | 2 | 60.2 | 59.6 | 2.90 | 4.08 | 4.15 |
| 76.1 | 2½ | 76.0 | 75.2 | 3.20 | 5.71 | 5.83 |
| 88.9 | 3 | 88.7 | 87.9 | 3.20 | 6.72 | 6.93 |
| 114.3 | 4 | 113.9 | 113.0 | 3.60 | 9.75 | 10.10 |
| 厚度公差 Thickness Tolerances | 輕級：+不限制，-8% Light series (Type L2)：+not specified，-8% | | | | | |
| 重量公差 Weight Tolerances | +10%，-8% | | | | | |
| 備註 Note | ❶ 此單位重量為包括接頭之單位重量。 ❶ The Unit Mass Includes Socket. | | | | | |

配管用管—EN10217 壓力配管用焊接鋼管

EN10217 Welded steel tubes for pressure purposes

| 外徑 Outside Diameter D (mm) | 厚度 Wall Thickness T (mm) | | | | | | | | | | | | | | | | | | | | | | | |
|--|---|---|-------|-----|-----|-----|-----|-----|-----|-----|-----|-----|---|-----|-----|-----|-----|-----|-----|------|------|------|--|--|
| | 1 | 2 | 3 | 1.6 | 1.8 | 2.0 | 2.3 | 2.6 | 2.9 | 3.2 | 3.6 | 4.0 | 4.5 | 5.0 | 5.6 | 6.3 | 7.1 | 8.0 | 8.8 | 10.0 | 11.0 | 12.5 | | |
| 21.3 | | | | | | | | | | | | | | | | | | | | | | | | |
| 26.9 | | | | | | | | | | | | | | | | | | | | | | | | |
| 33.7 | | | | | | | | | | | | | | | | | | | | | | | | |
| 42.4 | | | | | | | | | | | | | | | | | | | | | | | | |
| 48.3 | | | | | | | | | | | | | | | | | | | | | | | | |
| 60.3 | | | | | | | | | | | | | | | | | | | | | | | | |
| 76.1 | | | 73 | | | | | | | | | | | | | | | | | | | | | |
| 88.9 | | | | | | | | | | | | | | | | | | | | | | | | |
| 114.3 | | | | | | | | | | | | | | | | | | | | | | | | |
| 139.7 | | | | | | | | | | | | | | | | | | | | | | | | |
| 168.3 | | | 141.3 | | | | | | | | | | | | | | | | | | | | | |
| 219.1 | | | | | | | | | | | | | | | | | | | | | | | | |
| 273 | | | 244.5 | | | | | | | | | | | | | | | | | | | | | |
| 323.9 | | | | | | | | | | | | | | | | | | | | | | | | |
| 外徑公差 Tolerances of Outside Diameter | 外徑D ≤ 219.1: ±1% 或 ±0.5mm 取較高者 外徑D > 219.1: ±0.75% 或 ±6mm 取較低者 | | | | | | | | | | | | Outside Diameter: ≤ 219.1: ±1% or ±0.5mm whichever is the greater Outside Diameter: > 219.1: ±0.75% or ±6mm whichever is the smaller | | | | | | | | | | | |
| 厚度公差 Thickness Tolerances | 厚度T ≤ 5mm: ±10% 或 ±0.3mm 取較高者 厚度5 < T ≤ 40mm: ±8% 或 ±2mm 取較低者 | | | | | | | | | | | | Wall thickness T ≤ 5mm: ±10% or ±0.3mm whichever is the greater Wall thickness 5 < T ≤ 40mm: ±8% or ±2mm whichever is the smaller | | | | | | | | | | | |
| 備註 Note | 正公差 不包含焊縫區 | | | | | | | | | | | | The plus tolerances excludes the weld area. | | | | | | | | | | | |



消防撒水管

STEEL SPRINKLER PIPES

消防撒水管—ASTM A135 電阻焊接有縫鋼管

ASTM A135 Electric-Resistance-Welded Steel Pipe^①

| 標稱管徑 Nominal Diameter | 鋼管外徑 Outside Diameter | | | | 標稱厚度 Nominal Wall Thickness | | | |
|-----------------------------|-------------------------------|-------|-------------------|-------------|---|------|-------------------|-----------|
| | 標稱 Nominal | | 許可差 Tolerances | | 標稱 Nominal | | 許可差 Tolerances | |
| | NPS | in | mm | in | mm | in | mm | in |
| 1¼ | 1.660 | 42.2 | 1.6772~1.6614 | 42.6~42.2 | 0.0831 | 2.11 | 0.0906~0.0756 | 2.30~1.92 |
| 1½ | 1.900 | 48.3 | 1.9173~1.9000 | 48.7~48.3 | 0.0949 | 2.41 | 0.1024~0.0874 | 2.60~2.22 |
| 2 | 2.375 | 60.3 | 2.3976~2.3740 | 60.9~60.3 | 0.0949 | 2.41 | 0.1024~0.0874 | 2.60~2.22 |
| 2½ | 2.875 | 73.0 | 2.9038~2.8750 | 73.7~73.0 | 0.0831 | 2.11 | 0.0906~0.0756 | 2.30~1.92 |
| 3 | 3.500 | 88.9 | 3.5354~3.5200 | 89.8~89.4 | 0.0902 | 2.29 | 0.0977~0.0827 | 2.48~2.10 |
| 4 | 4.500 | 114.3 | 4.5433~4.4920 | 115.4~114.1 | 0.1035 | 2.63 | 0.1110~0.0960 | 2.86~2.44 |
| 備註 Note | ① 鑫陽可生產ASTM A135產品種類為Grade A。 | | | | ① For ASTM A135, Shin Yang is able to produce Grade A. | | | |
| 備考 Remarks | 上述產品皆已取得UL、CUL、FM消防撒水管認證。 | | | | The above-mentioned products have been approved by UL, CUL, and FM. | | | |

結構用鋼管

STRUCTURAL STEEL PIPES

結構用管—EN10219非合金和細晶粒冷成形焊接結構鋼管

EN10219 Cold formed welded structural hollow sections of non-alloy and fine grain steels.

| 標稱外徑 Specified outside Diameter | 標稱厚度 Specified thickness | 單位重量 Mass per unit length | 標稱外徑 Specified outside Diameter | 標稱厚度 Specified thickness | 單位重量 Mass per unit length | | |
|---|--------------------------------|---------------------------------|---------------------------------------|--|---------------------------------|-------|-------|
| mm | mm | kg/m | mm | mm | kg/m | | |
| 33.7 | 2.0 | 1.56 | 139.7 | 3.0 | 10.10 | | |
| | 2.5 | 1.92 | | 4.0 | 13.40 | | |
| | 3.0 | 2.27 | | 5.0 | 16.60 | | |
| 42.4 | 2.0 | 1.99 | | 6.0 | 19.80 | | |
| | 2.5 | 2.46 | | 6.3 | 20.70 | | |
| | 3.0 | 2.91 | | 8.0 | 26.00 | | |
| | 4.0 | 3.79 | | 3.0 | 12.20 | | |
| 48.3 | 2.0 | 2.28 | | 168.3 | 4.0 | 16.20 | |
| | 2.5 | 2.82 | | | 5.0 | 20.10 | |
| | 3.0 | 3.35 | | | 6.0 | 24.00 | |
| | 4.0 | 4.37 | 6.3 | | 25.20 | | |
| 60.3 | 2.0 | 2.88 | 219.1 | | 8.0 | 31.60 | |
| | 2.5 | 3.56 | | | 4.0 | 21.20 | |
| | 3.0 | 4.24 | | | 5.0 | 26.40 | |
| | 4.0 | 5.55 | | | 6.0 | 31.50 | |
| 76.1 | 2.0 | 3.65 | | | 273.0 | 6.3 | 33.10 |
| | 2.5 | 4.54 | | | | 8.0 | 41.60 |
| | 3.0 | 5.41 | | 10.0 | | 51.60 | |
| | 4.0 | 7.11 | | 12.0 | | 61.30 | |
| | 5.0 | 8.77 | | 12.5 | | 63.70 | |
| 88.9 | 2.0 | 4.29 | | 323.9 | | 6.0 | 39.50 |
| | 2.5 | 5.33 | 6.3 | | | 41.40 | |
| | 3.0 | 6.36 | 8.0 | | | 52.30 | |
| | 4.0 | 8.38 | 10.0 | | | 64.90 | |
| | 5.0 | 10.30 | 12.0 | | | 77.20 | |
| 114.3 | 2.5 | 6.89 | 323.9 | | 12.5 | 80.30 | |
| | 3.0 | 8.23 | | | 8.0 | 62.30 | |
| | 4.0 | 10.90 | | | 10.0 | 77.40 | |
| | 5.0 | 13.50 | | | 12.0 | 92.30 | |
| | 6.0 | 16.00 | | | 12.5 | 96.00 | |
| | 6.3 | 16.80 | | | | | |
| | 8.0 | 21.00 | | | | | |
| 邊長許可差 Tolerances of Outside Diameter | | ±1% 最小±0.5mm，最大±0.5mm | | ±1% min ±0.5mm，max ±0.5mm | | | |
| 厚度公差 Thickness Tolerances | | 厚度T≤5mm：±10% 厚度T>5mm：±0.5mm | | thickness T≤5mm：±10% thickness T>5mm：±0.5mm | | | |



結構用鋼管

STRUCTURAL STEEL PIPES

結構用管—ASTM A500冷成形建築用圓形碳鋼結構管

ASTM A500 Cold-Formed Welded and Seamless Carbon Steel Structural

Tubing in Rounds **圓管 Rounds**

| 標稱外徑 Outside Diameter | 標稱厚度 Thickness | | 單位重量 Unit Mass | |
|---|---------------------------------|------|--|-------|
| | in | mm | kg/m | lb/ft |
| Size | | | | |
| 1" | 0.100" | 2.54 | 1.93 | 1.30 |
| 1-1/4" | 0.125" | 3.18 | 3.06 | 2.06 |
| | 0.188" | 4.78 | 4.41 | 2.96 |
| 1-1/2" | 0.125" | 3.18 | 3.54 | 2.38 |
| | 0.145" | 3.68 | 4.05 | 2.72 |
| | 0.188" | 4.78 | 5.13 | 3.45 |
| 2" | 0.200" | 5.08 | 5.41 | 3.64 |
| | 0.125" | 3.18 | 4.48 | 3.01 |
| 2" | 0.188" | 4.78 | 6.54 | 4.40 |
| | 0.125" | 3.18 | 5.48 | 3.68 |
| 2-1/2" | 0.188" | 4.78 | 8.04 | 5.40 |
| | 0.200" | 5.08 | 8.51 | 5.72 |
| | 0.203" | 5.16 | 8.63 | 5.80 |
| 6" | 0.280" | 7.11 | 28.26 | 18.99 |
| 8" | 0.188" | 4.78 | 25.26 | 16.98 |
| | 0.250" | 6.35 | 33.31 | 22.39 |
| 外徑許可差 Tolerances of Outside Diameter | 1.9"以下 : ±0.5% 2"以上 : ±0.75% | | OD 1.9" under : ±0.5% OD 2" over : ±0.75% | |
| 厚度公差 Thickness Tolerances | ±10% | | | |

結構用管—ASTM A500冷成形建築用方矩形碳鋼結構管

ASTM A500 Cold-Formed Welded and Seamless Carbon Steel Structural

Tubing in Shapes **方矩形管 Shapes**

| 標稱外徑 Outside Dimensions | 標稱厚度 Thickness | | 單位重量 Unit Mass | |
|---|--|------|---|-------|
| | in | mm | kg/m | lb/ft |
| Size | | | | |
| 1"x1" | 0.065" | 1.65 | 1.18 | 0.79 |
| | 0.100" | 2.54 | 1.69 | 1.14 |
| 1-1/2"x1-1/2" | 0.100" | 2.54 | 2.71 | 1.82 |
| 2"x1" | 0.065" | 1.65 | 1.83 | 1.23 |
| | 0.100" | 2.54 | 3.72 | 2.50 |
| 2"x2" | 0.125" | 3.18 | 4.55 | 3.06 |
| | 0.188" | 4.78 | 6.45 | 4.33 |
| 3"x3" | 0.125" | 3.18 | 7.09 | 4.76 |
| | 0.188" | 4.78 | 10.26 | 6.89 |
| 3-1/2"x3-1/2" | 0.188" | 4.78 | 12.16 | 8.17 |
| 4"x4" | 0.250" | 6.35 | 18.18 | 12.21 |
| 5"x5" | 0.250" | 6.35 | 23.24 | 15.62 |
| 6"x6" | 0.188" | 4.78 | 21.69 | 14.58 |
| | 0.250" | 6.35 | 28.31 | 19.02 |
| 外徑許可差 Tolerances of Outside Diameter | 邊長2.5"以下 : ±0.020" 邊長超過2.5"並在3.5"以下 : ±0.025" 邊長超過3.5"並在5.5"以下 : ±0.030" 邊長超過5.5" : ±1% | | OD 2.5" under : ±0.020" 2.5" < OD ≤ 3.5" : ±0.025" 3.5" < OD ≤ 5.5" : ±0.030" OD 5.5" over : ±1% | |
| 厚度公差 Thickness Tolerances | ±10% | | | |

結構用管—CSA G40.20-13/ CSA G40.21-13一般軋輪或焊接成形結構用鋼管

CSA G40.20-13/ CSA G40.21-13 General requirements for rolled

or welded structural quality steel/Structural quality steel

方矩形管 CSA

| 標稱外徑 Specified Outside Dimensions | 標稱厚度 Specified Wall Thickness | | 單位重量 Unit Mass | |
|---|--|------|---|-------|
| | in | mm | kg/m | lb/ft |
| Size | | | | |
| 1"x1" | 0.065" | 1.65 | 1.18 | 0.79 |
| | 0.100" | 2.54 | 1.69 | 1.14 |
| 1-1/2"x1-1/2" | 0.065" | 1.65 | 1.83 | 1.23 |
| | 0.100" | 2.54 | 2.71 | 1.82 |
| 2"x1" | 0.100" | 2.54 | 2.71 | 1.82 |
| | 0.100" | 2.54 | 3.72 | 2.50 |
| 2"x2" | 0.125" | 3.18 | 4.55 | 3.06 |
| | 0.150" | 3.81 | 5.33 | 3.58 |
| | 0.188" | 4.78 | 6.45 | 4.33 |
| 3"x3" | 0.125" | 3.18 | 7.09 | 4.76 |
| | 0.188" | 4.78 | 10.26 | 6.89 |
| 3-1/2"x3-1/2" | 0.100" | 2.54 | 6.76 | 4.54 |
| | 0.125" | 3.18 | 8.35 | 5.61 |
| | 0.188" | 4.78 | 12.16 | 8.17 |
| 4"x2" | 0.125" | 3.18 | 7.09 | 4.76 |
| | 0.188" | 4.78 | 10.26 | 6.89 |
| 4"x4" | 0.125" | 3.18 | 9.62 | 6.47 |
| | 0.188" | 4.78 | 14.07 | 9.45 |
| | 0.250" | 6.35 | 18.18 | 12.21 |
| 5"x5" | 0.125" | 3.18 | 12.16 | 8.17 |
| | 0.188" | 4.78 | 17.88 | 12.02 |
| 6"x4" | 0.250" | 6.35 | 23.24 | 15.62 |
| | 0.188" | 4.78 | 17.88 | 12.02 |
| 6"x6" | 0.250" | 6.35 | 23.24 | 15.62 |
| | 0.188" | 4.78 | 21.69 | 14.58 |
| 6"x6" | 0.250" | 6.35 | 28.31 | 19.02 |
| | 0.188" | 4.78 | 21.69 | 14.58 |
| 外徑許可差 Tolerances of Outside Diameter | 邊長2.5"以下 : ±0.020" 邊長超過2.5"並在3.5"以下 : ±0.025" 邊長超過3.5"並在5.5"以下 : ±0.030" 邊長超過5.5" : ±1% | | OD 2.5" under : ±0.020" 2.5" < OD ≤ 3.5" : ±0.025" 3.5" < OD ≤ 5.5" : ±0.030" OD 5.5" over : ±1% | |
| 厚度公差 Thickness Tolerances | +10%, -5% | | | |



API CASING AND LINE PIPES

API線管—API Spec 5L管線有縫鋼管(PSL 1 & 2) ;
API Spec 5L Specifications Line Pipe

| 規格 Size | | | 重量 Weight | | | 水壓試驗壓力 Hydrostatic Test Pressure(psi) | | | | | | | | | | | | | |
|------------------------|-------|--------|----------------------|-------|--------|--|-------|-------|------|------|-------|------|------|------|------|------|------|------|------|
| 外徑 Outside Diameter | | | 厚度 Wall Thickness | | | lb/ft | kg/ft | kg/m | A | B | X42 | X46 | X52 | X56 | X60 | X65 | | | |
| Nominal Size | in | mm | Sch.No. | in | mm | | | | | | | | | | | | | | |
| 4 | 4 ½ | 114.30 | | 0.125 | 3.2 | 5.85 | 2.65 | 8.77 | 1020 | 1180 | 1400 | 1550 | 1740 | 1890 | 2010 | 2180 | | | |
| | | | | 0.141 | 3.6 | 6.57 | 2.98 | 9.83 | 1150 | 1340 | 1580 | 1750 | 1960 | 2130 | 2260 | 2450 | | | |
| | | | | 0.156 | 4.0 | 7.24 | 3.29 | 10.88 | 1270 | 1480 | 1750 | 1930 | 2170 | 2350 | 2500 | 2720 | | | |
| | | | | 0.172 | 4.4 | 7.96 | 3.61 | 11.92 | 1400 | 1630 | 1930 | 2130 | 2390 | 2590 | 2760 | 2990 | | | |
| | | | | 0.188 | 4.8 | 8.67 | 3.93 | 12.96 | 1530 | 1780 | 2110 | 2330 | 2620 | 2840 | 3020 | 3270 | | | |
| | | | | 0.203 | 5.2 | 9.32 | 4.23 | 13.99 | 1650 | 1920 | 2280 | 2510 | 2830 | 3060 | 3260 | 3530 | | | |
| | | | | 0.219 | 5.6 | 10.02 | 4.54 | 15.01 | 1780 | 2080 | 2460 | 2710 | 3050 | 3300 | 3520 | 3810 | | | |
| | | | 40(Std) | 0.237 | 6.0 | 10.80 | 4.89 | 16.02 | 1920 | 2250 | 2660 | 2930 | 3300 | 3570 | 3800 | 4120 | | | |
| | | | | 0.250 | 6.4 | 11.36 | 5.15 | 17.03 | 2030 | 2370 | 2800 | 3090 | 3480 | 3770 | 4010 | 4350 | | | |
| | | | | 0.281 | 7.1 | 12.67 | 5.74 | 18.77 | 2280 | 2660 | 3150 | 3480 | 3910 | 4240 | 4510 | 4890 | | | |
| | | | | 0.312 | 7.9 | 13.97 | 6.33 | 20.73 | 2530 | 2960 | 3500 | 3860 | 4340 | 4710 | 5010 | 5430 | | | |
| | | | 80(XS) | 0.337 | 8.6 | 15.00 | 6.80 | 22.42 | 2740 | 3190 | 3780 | 4170 | 4690 | 5080 | 5410 | 5870 | | | |
| | | | 5 | 5 ¾ | 141.30 | | 0.125 | 3.2 | 7.26 | 3.32 | 10.90 | 820 | 960 | 1130 | 1250 | 1410 | 1530 | 1620 | 1760 |
| | | | | | | | 0.156 | 4.0 | 9.01 | 4.09 | 13.54 | 1020 | 1200 | 1420 | 1560 | 1760 | 1900 | 2030 | 2200 |
| | 0.188 | 4.8 | | | | 10.79 | 4.89 | 16.16 | 1240 | 1440 | 1710 | 1880 | 2120 | 2290 | 2440 | 2650 | | | |
| | 0.219 | 5.6 | | | | 12.50 | 5.67 | 18.74 | 1440 | 1680 | 1990 | 2190 | 2470 | 2670 | 2840 | 3080 | | | |
| 40(Std) | 0.258 | 6.6 | | | | 14.62 | 6.63 | 21.92 | 1700 | 1980 | 2340 | 2580 | 2910 | 3150 | 3350 | 3630 | | | |
| | 0.281 | 7.1 | | | | 15.85 | 7.19 | 23.50 | 1850 | 2150 | 2550 | 2810 | 3160 | 3430 | 3650 | 3960 | | | |
| | 0.312 | 7.9 | | | | 17.50 | 7.94 | 25.99 | 2050 | 2390 | 2830 | 3120 | 3510 | 3810 | 4050 | 4390 | | | |
| | 0.344 | 8.7 | | | | 19.17 | 8.70 | 28.45 | 2260 | 2640 | 3120 | 3440 | 3870 | 4200 | 4470 | 4840 | | | |
| 80(XS) | 0.375 | 9.5 | | | | 20.78 | 9.43 | 30.88 | 2460 | 2870 | 3400 | 3750 | 4220 | 4580 | 4870 | 5280 | | | |
| 6 | 6 ¾ | 168.30 | | | | | 0.125 | 3.2 | 8.68 | 3.97 | 13.03 | 690 | 800 | 1190 | 1310 | 1480 | 1600 | 1700 | 1850 |
| | | | | 0.141 | 3.6 | 9.76 | 4.46 | 14.62 | 780 | 910 | 1340 | 1480 | 1670 | 1810 | 1920 | 2080 | | | |
| | | | | 0.156 | 4.0 | 10.78 | 4.94 | 16.21 | 860 | 1000 | 1490 | 1640 | 1840 | 2000 | 2130 | 2300 | | | |
| | | | | 0.172 | 4.4 | 11.85 | 5.38 | 17.78 | 950 | 1110 | 1640 | 1810 | 2030 | 2200 | 2340 | 2540 | | | |
| | | | | 0.188 | 4.8 | 12.92 | 5.86 | 19.35 | 1040 | 1210 | 1790 | 1980 | 2220 | 2410 | 2560 | 2780 | | | |
| | | | | 0.203 | 5.2 | 13.92 | 6.31 | 20.91 | 1120 | 1310 | 1930 | 2130 | 2400 | 2600 | 2770 | 3000 | | | |
| | | | | 0.219 | 5.6 | 14.98 | 6.79 | 22.47 | 1210 | 1410 | 2090 | 2300 | 2590 | 2800 | 2980 | 3240 | | | |
| | | | | 0.250 | 6.4 | 17.02 | 7.72 | 25.55 | 1380 | 1610 | 2380 | 2630 | 2960 | 3200 | 3410 | 3690 | | | |
| | | | 40(Std) | 0.280 | 7.1 | 18.97 | 8.60 | 28.22 | 1540 | 1800 | 2670 | 2940 | 3310 | 3590 | 3820 | 4140 | | | |
| | | | | 0.312 | 7.9 | 21.04 | 9.54 | 31.25 | 1720 | 2010 | 2970 | 3280 | 3690 | 4000 | 4250 | 4610 | | | |
| | | | | 0.344 | 8.7 | 23.08 | 10.47 | 34.24 | 1900 | 2210 | 3280 | 3610 | 4070 | 4400 | 4690 | 5080 | | | |
| | | | | 0.375 | 9.5 | 25.03 | 11.35 | 37.20 | 2070 | 2410 | 3570 | 3940 | 4430 | 4800 | 5110 | 5540 | | | |

| 規格 Size | | | 重量 Weight | | | 水壓試驗壓力 Hydrostatic Test Pressure(psi) | | | | | | | | | | | | | |
|------------------------------|-------|--------|---|-------|--------|--|-------|-------|---|-------|-------|----------------|------|------|------|------|------|------|------|
| 外徑 Outside Diameter | | | 厚度 Wall Thickness | | | lb/ft | kg/ft | kg/m | A | B | X42 | X46 | X52 | X56 | X60 | X65 | | | |
| Nominal Size | in | mm | Sch.No. | in | mm | | | | | | | | | | | | | | |
| 8 | 8 ¾ | 219.10 | | 0.156 | 4.0 | 14.11 | 6.47 | 21.22 | 660 | 770 | 1140 | 1260 | 1420 | 1530 | 1630 | 1770 | | | |
| | | | | 0.188 | 4.8 | 16.94 | 7.68 | 25.37 | 800 | 930 | 1380 | 1520 | 1710 | 1850 | 1970 | 2130 | | | |
| | | | | 0.203 | 5.2 | 18.26 | 8.28 | 27.43 | 860 | 1000 | 1480 | 1640 | 1840 | 2000 | 2120 | 2300 | | | |
| | | | | 0.219 | 5.6 | 19.66 | 8.92 | 29.48 | 930 | 1080 | 1600 | 1770 | 1990 | 2150 | 2290 | 2490 | | | |
| | | | 20 | 0.250 | 6.4 | 22.36 | 10.14 | 33.57 | 1060 | 1240 | 1830 | 2020 | 2270 | 2460 | 2620 | 2840 | | | |
| | | | 30 | 0.277 | 7.0 | 27.70 | 11.20 | 36.61 | 1170 | 1370 | 2030 | 2240 | 2520 | 2720 | 2900 | 3140 | | | |
| | | | | 0.312 | 7.9 | 27.70 | 12.56 | 41.14 | 1320 | 1540 | 2280 | 2520 | 2830 | 3070 | 3270 | 3540 | | | |
| | | | 40(Std) | 0.322 | 8.2 | 28.55 | 12.95 | 42.65 | 1360 | 1590 | 2360 | 2600 | 2920 | 3170 | 3370 | 3650 | | | |
| | | | | 0.344 | 8.7 | 30.42 | 13.80 | 45.14 | 1460 | 1700 | 2520 | 2780 | 3120 | 3380 | 3600 | 3900 | | | |
| | | | | 0.375 | 9.5 | 33.04 | 14.99 | 49.10 | 1590 | 1850 | 2740 | 3030 | 3400 | 3690 | 3930 | 4260 | | | |
| | | | | 0.438 | 11.2 | 38.3 | 17.37 | 56.94 | 1860 | 2170 | 3200 | 3530 | 3980 | 4310 | 4580 | 4970 | | | |
| | | | 80(XS) | 0.500 | 12.7 | 43.39 | 19.68 | 64.64 | 2120 | 2470 | 3660 | 4040 | 4540 | 4920 | 5230 | 5670 | | | |
| | | | 10 | 10 ¾ | 273.10 | | 0.219 | 6.4 | 24.63 | 11.17 | 36.94 | 740 | 870 | 1460 | 1610 | 1810 | 1960 | 2080 | 2260 |
| | | | | | | 20 | 0.250 | 7.1 | 28.04 | 12.72 | 42.09 | 850 | 990 | 1660 | 1830 | 2060 | 2240 | 2380 | 2580 |
| | 0.279 | 7.8 | | | | 31.20 | 14.15 | 46.57 | 950 | 1110 | 1860 | 2050 | 2300 | 2500 | 2660 | 2880 | | | |
| 30 | 0.307 | 8.7 | | | | 34.24 | 15.53 | 51.03 | 1040 | 1220 | 2040 | 2250 | 2530 | 2750 | 2920 | 3170 | | | |
| | 0.344 | 9.3 | | | | 38.23 | 17.34 | 56.72 | 1170 | 1360 | 2290 | 2520 | 2840 | 3080 | 3270 | 3550 | | | |
| 40(Std) | 0.365 | 12.7 | | | | 40.48 | 18.36 | 60.50 | 1240 | 1450 | 2430 | 2680 | 3010 | 3260 | 3470 | 3770 | | | |
| | 0.438 | 11.2 | | | | 48.24 | 21.88 | 71.72 | 1490 | 1740 | 2910 | 3210 | 3620 | 3920 | 4170 | 4520 | | | |
| 80(XS) | 0.500 | 12.7 | | | | 54.74 | 24.83 | 81.55 | 1700 | 1980 | 3330 | 3670 | 4130 | 4470 | 4760 | 5160 | | | |
| 12 | 12 ¾ | 329.90 | 20 | 0.250 | 7.9 | 33.38 | 15.14 | 50.11 | 720 | 840 | 1400 | 1550 | 1740 | 1890 | 2010 | 2180 | | | |
| | | | | 0.281 | 8.4 | 37.42 | 16.97 | 55.47 | 810 | 940 | 1580 | 1740 | 1960 | 2120 | 2250 | 2440 | | | |
| | | | | 0.312 | 8.7 | 41.45 | 18.80 | 61.56 | 890 | 1040 | 1750 | 1930 | 2170 | 2350 | 2500 | 2710 | | | |
| | | | 30 | 0.330 | 9.5 | 43.77 | 19.85 | 65.35 | 950 | 1100 | 1850 | 2040 | 2300 | 2490 | 2650 | 2870 | | | |
| | | | | 0.344 | 10.3 | 45.58 | 20.67 | 67.62 | 990 | 1150 | 1930 | 2130 | 2390 | 2590 | 2760 | 2990 | | | |
| | | | | 0.375 | 11.1 | 49.56 | 22.48 | 73.65 | 1070 | 1250 | 2100 | 2320 | 2610 | 2830 | 3010 | 3260 | | | |
| | | | 40(Std) | 0.406 | 11.1 | 53.52 | 24.28 | 79.65 | 1160 | 1360 | 2280 | 2510 | 2830 | 3060 | 3260 | 3530 | | | |
| | | | | 0.438 | 11.1 | 57.59 | 26.12 | 85.62 | 1260 | 1460 | 2460 | 2710 | 3050 | 3300 | 3510 | 3810 | | | |
| 厚度公差 Thickness Tolerances | | | +不限制， -12.5% | | | +not specified, -12.5% | | | 重量公差 Weight Tolerances | | | +10%, -3.5% | | | | | | | |
| 備註 Note | | | 鑫陽可生產API Spec 5L PSL 1 & 2，產品種類為Grade A25 (Class I、II)、B、X42、X46、X52、X65。 | | | | | | For API Spec 5L PSL 1 & 2, Shin Yang is able to produce Grade A25 (Class I、II)、B、X42、X46、X52 and X65. | | | | | | | | | | |
| 備考 Remarks | | | 上述產品皆已取得美國石油協會API授權使用API Monogram. | | | | | | The above-mentioned products have been authorized to use API Monogram. | | | | | | | | | | |



API CASING AND LINE PIPES

API套管—API Spec 5CT 鑽探用有縫鋼管(Group 1)

API Spec 5CT Specifications for Casing and Tubing

| 規格 Size | | | | | | 重量 Weight | | | 水壓試驗壓力 Hydrostatic Test Pressure (Mpa) | | 水壓試驗壓力 Hydrostatic Test Pressure (psi) | |
|--------------|-----------|-------|------------------------|-------------------|-------|-----------|-------|-------|--|------|--|------|
| Nominal Size | 代號 Lables | | 外徑 Outside Diameter mm | 厚度 Wall Thickness | | lb/ft | kg/ft | kg/m | H40 | J55 | H40 | J55 |
| | 1 | 2 | | in | mm | | | | | | | |
| 4 | 4 ½ | 9.59 | 114.30 | 0.205 | 5.21 | 9.42 | 4.27 | 14.02 | 20.0 | 27.5 | 2900 | 4000 |
| | | 10.50 | 114.30 | 0.224 | 5.69 | 10.24 | 4.65 | 15.24 | 22.0 | 30.0 | 3200 | 4400 |
| | | 11.60 | 114.30 | 0.250 | 6.35 | 11.36 | 5.15 | 16.90 | 24.5 | 33.5 | 3600 | 4900 |
| | | 13.50 | 114.30 | 0.290 | 7.37 | 13.06 | 5.92 | 19.43 | 28.5 | 39.0 | 4100 | 5700 |
| | | 15.10 | 114.30 | 0.337 | 8.56 | 15.00 | 6.80 | 22.32 | 33.0 | 45.5 | 4800 | 6600 |
| 5 | 5 ½ | 14.00 | 139.70 | 0.244 | 6.20 | 13.72 | 6.22 | 20.41 | 19.5 | 27.0 | 2800 | 3900 |
| | | 15.50 | 139.70 | 0.275 | 6.98 | 15.35 | 6.96 | 22.84 | 22.0 | 30.5 | 3200 | 4400 |
| | | 17.00 | 139.70 | 0.304 | 7.72 | 16.88 | 7.66 | 25.13 | 24.5 | 33.5 | 3500 | 4900 |
| | | 20.00 | 139.70 | 0.361 | 9.17 | 19.83 | 9.00 | 29.52 | 29.0 | 40.0 | 4200 | 5800 |
| | | 23.00 | 139.70 | 0.415 | 10.54 | 22.56 | 10.23 | 33.57 | 33.5 | 46.0 | 4800 | 6700 |
| 6 | 6 ¾ | 20.00 | 168.28 | 0.288 | 7.32 | 19.52 | 8.86 | 29.06 | 19.0 | 26.5 | 2800 | 3800 |
| | | 24.00 | 168.28 | 0.352 | 8.94 | 23.60 | 10.71 | 35.13 | 23.5 | 32.0 | 3400 | 4700 |
| | | 28.00 | 168.28 | 0.417 | 10.56 | 27.60 | 12.52 | 41.07 | 28.0 | 38.0 | 4000 | 5500 |
| 7 | 7 | 17.00 | 177.80 | 0.231 | 5.87 | 16.72 | 7.59 | 24.89 | 14.5 | 20.0 | 2100 | 2900 |
| | | 20.00 | 177.80 | 0.272 | 6.91 | 19.57 | 8.88 | 29.12 | 17.0 | 23.5 | 2500 | 3400 |
| | | 23.00 | 177.80 | 0.317 | 8.05 | 22.64 | 10.27 | 33.70 | 20.0 | 27.5 | 2900 | 4000 |
| | | 26.00 | 177.80 | 0.362 | 9.19 | 25.68 | 11.65 | 38.21 | 23.0 | 31.5 | 3300 | 4600 |
| | | 29.00 | 177.80 | 0.408 | 10.36 | 28.74 | 13.04 | 42.78 | 26.0 | 35.5 | 3700 | 5100 |
| 8 | 8 ¾ | 24.00 | 219.08 | 0.264 | 6.71 | 23.61 | 10.71 | 35.14 | 13.5 | 18.5 | 2000 | 2700 |
| | | 28.00 | 219.08 | 0.304 | 7.72 | 27.04 | 12.26 | 40.24 | 15.5 | 21.5 | 2300 | 3100 |
| | | 32.00 | 219.08 | 0.352 | 8.94 | 31.13 | 14.12 | 46.33 | 18.0 | 24.5 | 2600 | 3600 |
| | | 36.00 | 219.08 | 0.400 | 10.16 | 35.17 | 15.95 | 52.34 | 20.5 | 28.0 | 3000 | 4100 |

| 規格 Size | | | | | | 重量 Weight | | | 水壓試驗壓力 Hydrostatic Test Pressure (Mpa) | | 水壓試驗壓力 Hydrostatic Test Pressure (psi) | |
|---------------------------|-----------|--|------------------------|-------------------|-------|-----------|-------|-------|--|------|--|------|
| Nominal Size | 代號 Lables | | 外徑 Outside Diameter mm | 厚度 Wall Thickness | | lb/ft | kg/ft | kg/m | H40 | J55 | H40 | J55 |
| | 1 | 2 | | in | mm | | | | | | | |
| 9 | 9 ¾ | 32.30 | 244.48 | 0.312 | 7.92 | 31.05 | 14.08 | 46.20 | 14.5 | 19.5 | 2100 | 2900 |
| | | 36.00 | 244.48 | 0.352 | 8.94 | 34.89 | 15.83 | 51.93 | 16.0 | 22.0 | 2300 | 3200 |
| | | 40.00 | 244.48 | 0.395 | 10.03 | 38.97 | 17.67 | 57.99 | 18.0 | 25.0 | 2600 | 3600 |
| | | 43.50 | 244.48 | 0.435 | 11.05 | 42.74 | 19.39 | 63.60 | 20.0 | 27.5 | 2900 | 4000 |
| | | 47.00 | 244.48 | 0.472 | 11.99 | 46.19 | 20.95 | 68.73 | 21.5 | 29.5 | 3100 | 4300 |
| 10 | 10 ¾ | 32.75 | 273.05 | 0.279 | 7.09 | 31.25 | 14.17 | 46.50 | 8.5 | 12.0 | 1200 | 1700 |
| | | 40.50 | 273.05 | 0.350 | 8.89 | 38.91 | 17.65 | 57.91 | 11.0 | 15.0 | 1600 | 2100 |
| | | 45.50 | 273.05 | 0.400 | 10.16 | 44.26 | 20.08 | 65.87 | 12.5 | 17.0 | 1800 | 2500 |
| 13 | 13 ¾ | 48.00 | 339.72 | 0.330 | 8.38 | 46.01 | 20.87 | 68.47 | 8.0 | 11.0 | 1200 | 1600 |
| | | 54.50 | 339.72 | 0.380 | 9.65 | 52.78 | 23.94 | 78.55 | 9.5 | 13.0 | 1400 | 1900 |
| | | 61.00 | 339.72 | 0.430 | 10.92 | 59.50 | 26.99 | 88.54 | 10.5 | 14.5 | 1500 | 2100 |
| | | 68.00 | 339.72 | 0.480 | 12.19 | 66.16 | 30.01 | 98.46 | 12.0 | 16.5 | 1700 | 2400 |
| 厚度公差 Thickness Tolerances | | +不限制， -12.5% | | | | | | | | | | |
| 重量公差 Weight Tolerances | | +6.5%， -3.5% | | | | | | | | | | |
| 備註 Note | | 鑫陽可生API Spec 5CT Group1產品種類為Grade H40、J55。 For API Spec 5CT PSL 1, Shin Yang is able to produce Grade H40 and J55. | | | | | | | | | | |
| 備考 Remarks | | 上述產品皆已取得美國石油協會API授權使用API Monogram。 The above-mentioned products have been authorized to use API Monogram. | | | | | | | | | | |



PACKAGING, LABELING AND MARKING

鑫陽鋼管產品均由本公司施予適當的包裝，而此包裝僅提供出貨後短期室內儲存之保護，而對此期間之儲存保護，相關業者保留均負有妥善保管之責任。無論如何絕不可將鋼管產品貯存於潮濕環境或戶外，以及濕氣結露或戶外雨水可能滲入鋼管包裝之環境，此時會因毛細管現象之作用汲入鋼管表面，導致水氣無法正常蒸發，而浸入鋼管底材。經一段時間後，易在鍍層或底材間產生白銹或紅銹，導致產品特性惡化，減短預期的使用壽命，並影響產品之外觀。

所有的鑫陽產品在出廠前均依本公司之標準或客戶指定的方式予以包裝以減低在搬運儲放時可能遭受的損壞。此外在產品外包裝上再加以明確的包裝標籤標示，且每支鋼管管身會賦予其噴誌，以便輕易的辨別該產品的身份及相關規格資料。

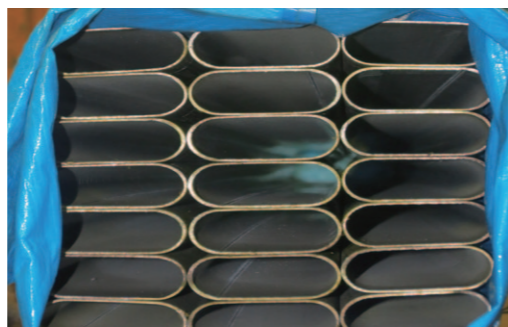
Steel pipes of Shin Yang are performed with appropriate packing. The packing is a temporary protection for indoor storage, buyer has responsibilities for indoor storage in appropriate condition. Under any circumstances, do not store steel pipes in a humid or outdoor environment. The capillarity may cause mist or water inhaling into surface or even base metal and unable to evaporate normally. It can easily cause rust between protection and base metal, deteriorate steel properties or its appearance and shorten its life span.

All products are packed in accordance with Shin Yang's standard packaging specifications, unless otherwise specified by the customer in order to minimize damage during handling and storage. In addition to product label pasted on the package, marking is stenciled on pipe body, so related information about the pipe can be easily identified.

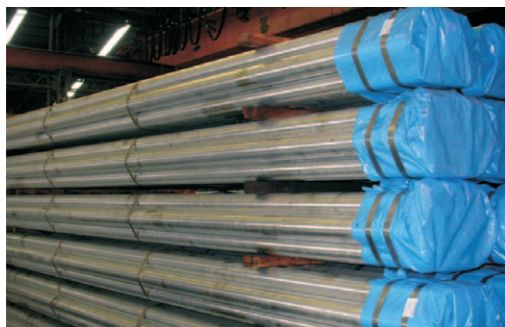
包裝範例 Example of Packaging



標準包裝 (適用厚度 Sch 10以上)
Standard Packaging (Applicable to Wall Thickness ≥ Sch 10)



標準包裝 (適用橢圓管)
Standard Packaging (Applicable to Cattle Rail Pipes)



PVC 淋膜布兩端包裝
Both Ends Wrapped with PVC



PVC 淋膜布全部包裝 (兩端不包)
Pipe Body Wrapped with PVC (Both Ends Without)

包裝標籤範例 Example of Label

黑鋼管之標籤範例
Sample of product label for black steel pipe



後熱浸鍍鋅鋼管之標籤範例
Sample of product label for post hot-dip zinc-coated pipe



鋼管管身噴誌範例 Example of Marking on Pipe Body

- CNS 鋼管產品(適用內銷) CNS Mark Steel Pipe Product (for domestic use)
 鑫陽時間代碼 CNS 4626 G3111 STPG 410 -E-G 尺寸 台正字第7755號 批號
- API Monogram 鋼管產品 API Specifications Pipe Product
 (1) 單一規範 Single Specifications
 SHIN YANG TAIWAN + Time Code + Spec 5L-0507 Month-Year + Dimensions +B PSL 1 HFW + Lot
 (2) 多種規範 Multiple Specifications
 SHIN YANG TAIWAN+Time Code+Spec 5L-0507 Month-Year/ASTM A53 B/ASME SA53 B +Dimensions+B PSL 1 HFW+Lot
- 國際規範鋼管產品 International Specifications Steel Pipe Product
 SY TAIWAN+Time Code+ERW ASTM A53/A +Dimensions+Lot
- 鑫陽公司規範之鋼管產品 Shin Yang's Standard (SYS) Steel Pipe Product
 鑫陽時間代碼 尺寸 批號 SY TAIWAN+Time Code+ Dimensions+Lot

備考：(1) API Monogram鋼管產品多種規範噴誌內容係表示均符合多種規範之要求，客戶可依需求選擇此噴誌內容。
(2) 鑫陽鋼管產品管身均有『 鑫陽』或『SHIN YANG』標誌。(與 鑫陽 均為 鑫陽鋼鐵的註冊商標，仿冒必究。)
Remarks：(1) Multiple specifications indicate that the marking complies with multiple international standards and can be stenciled on API Monogram pipe product upon request.
(2) “ 鑫陽” or “SHIN YANG” are stenciled on each pipe body. (and 鑫陽 are trademarks of Shin Yang Steel Co., Ltd. All rights reserved.)



鑫陽鋼管產品尺寸齊全且適用於多種用途，客戶可依鋼管尺寸與用途之需求向本公司訂購適合之鋼管。客戶於訂購時或使用鋼管後，如有問題時，請與本公司鋼管銷售部或鋼管技術部。

Steel pipes of Shin Yang are available in a broad range of sizes and qualities for various applications. Customers can select a product most suitable to their need.

Should you have any question, please contact our Pipe Marketing & Sales Division or Pipe Technology Division.

訂購鋼管產品時請註明下列事項

When ordering our pipe products, please specify the following items.

| 項次 Item | 註明項目 Information | 範例 Example |
|------------|--|---|
| 1 | 品名(熱軋鋼管/冷軋鋼管/預熱浸鍍鋅鋼管/後熱浸鍍鋅鋼管) Commodity (Hot-rolled/Cold-rolled/Pre-galvanized/ Post Hot-dip Galvanized Steel Pipes) | 熱軋鋼管 Hot-Rolled Steel Pipe |
| 2 | 規格記號(CNS, JIS, ASTM, BS或其他規格) Specification designation (CNS, JIS, ASTM, BS or other standard) | ASTM A53 Grade A |
| 3 | 鍍鋅/絞牙/平口 Zinc-coating/Treatment/Plain Ends | — |
| 4 | 表面處理 Surface Treatment | 透明凡立水/馬辛油 Lacquer/Machine Oil |
| 5 | 尺寸(外徑×厚度×長度m or ft) Dimensions (Outside Diameter×Thickness×Length m or ft) | 1"×4mm×6mm/ 1"×0.133"×21' |
| 6 | 用途 Application | 流體配管 Water Transit Pipe |
| 7 | 訂購數量(支) Volume (pieces) | 2000 pieces |
| 8 | 交貨期 Delivery Date | 2011/03/31 |
| 9 | 標示 Labeling | 依鑫陽公司標準 Mill standard |
| 10 | 包裝方式 Packaging | 依鑫陽公司標準 Mill standard |
| 11 | 特殊要求 Special Requirements, if any | 內刮/正切/倒角 Inside Bead Removal/ Square Cut/ Bevel End |



台灣鋼鐵產業之發展在社會日漸多元化的影響下，因土地取得日趨不易，工資亦日益高漲，使得生產工廠的設立及經營亦日益困難。尤其是製管產業，經營更是不易。

鑫陽承襲燁輝企業固有優良的企業文化，以及精實的品質與服務管理，繼續服務海內外客戶，為使產品組合更為多元化，鑫陽鋼鐵已先後增設中型及API管車。中型管車除擴大既有之矩、方形管之尺寸外，亦可生產橢圓管。而API管車也可生產最大13³/₈"之管徑，故可滿足客戶對結構、空調及石化等用管更大之需求。

鑫陽於2012年4月取得TAF檢測實驗室認證，以及於2013年7月取得新JIS MARK認證，同時也將朝向高品級之產品研究發展，不僅要供應最優質的鋼品，更要提供客戶全方位之至善服務，而成為全球最好之鋼管製造服務企業。

The development of Taiwan steel industry is influenced by social diversification. Land procurement is getting tougher. Labor cost is increasing too. The establishment and operation of a manufacturer thus become challenging. The operation of pipe making mills is especially difficult.

SHIN YANG inherits the intrinsic excellent corporate culture, quality and service management from Yieh Phui. It will keep providing services to the customers in Taiwan and all over the world. In order to have a more diversified product mix, SHIN YANG has installed pipe forming equipment for middle-dimension pipe and API pipe forming equipment. In the pipe forming equipment for middle-dimension pipe, rectangular and oval pipes will be produced. The API pipe forming equipment can produce pipe dimension up to 13³/₈". It can satisfy customers' needs with structural, air-conditioning, and petrochemical pipes.

SHIN YANG acquired the certificate of accreditation for testing measurement laboratory in Apr. 2012, and obtained Japanese Industrial Standard (JIS Mark) in July 2013. We will also endeavor to conduct the product research for high quality applications. Not only the finest steel products, but also total solutions will be furnished to our customers, making SHIN YANG the best steel manufacturer and service provider in the world.



Registered Firm
品質管理系統
驗證通過工廠



Registered Firm
正字標誌產品
驗證通過工廠



JIS Mark
Qualified Factory
韓國KTR審查
認證合格工廠



Registered Firm
職業安全衛生管理
系統驗證通過工廠

API
5L&5CT

Registered Firm
品質管理系統
驗證通過工廠



CE Mark
歐盟產品認證



Registered Firm
全國認證基金會TAF檢測
實驗室認證通過工廠



鑫陽鋼鐵股份有限公司
SHIN YANG STEEL CO., LTD.

82544 高雄市橋頭區芋寮路297號
總機：+886-7-6125177

鋼管銷售部

分機：7261 · 7262 · 7263 · 7264
專線：+886-7-6111296 · 6111488
傳真：+886-7-6126325

鋼管技術部

分機：7841 · 7842
專線：+886-7-6114131
傳真：+886-7-6114180
台灣地區免付費電話：0800-666723

統一編號：53235414

HEAD OFFICE

No. 297, Yuliao Road, Qiaotou District,
Kaohsiung City 82544, Taiwan (R.O.C.)

PIPE MARKETING & SALES DIVISION

TEL：+886-7-6125177-7261-7262
TEL：+886-7-6111296-6111488
FAX：+886-7-6126325

PIPE-TECHNOLOGY DIVISION

TEL：+886-7-6125177-7841-7842
TEL：+886-7-6114131
FAX：+886-7-6114180

WEBSITE：www.shinyangsteel.com.tw
E-MAIL：sales@shinyangsteel.com.tw